



# RIVERLAND FIELD DAYS

OFFICIAL PROGRAM

September  
15th & 16th 2023



**AAFDA**  
Association of Agricultural Field Days of Australasia





PAVILION  
**P28**

**SAVE WATER**  
BY MONITORING  
YOUR TREES AND FRUIT



**SAVE LABOUR**  
BY REMOTELY  
MONITORING  
YOUR IRRIGATION

 **Phytech**  
Plant-Based Farming

# Purchase Field Days Gate Tickets now - Online

[www.riverlandfielddays.com.au](http://www.riverlandfielddays.com.au)

Click on '**BUY TICKETS**' on the home page.

It is easy and simple to do.

**There will be no cash at the Gates.**

This will greatly assist our volunteer team.



## Visitor Information

### GATES OPEN

9.00AM TO 5.00PM

Friday 15th & Saturday 16th, September 2023



#### BABY CHANGE ROOM

Infant changing area is located at Site 430.



#### FOOD COURTS

Food stalls are located along Second, Fourth, Sixth Avenues, Pavilion Boulevard and The Hut.



#### MEDICAL HELP

First Aid volunteers are located near the Administration Centre on site 428.



#### INFORMATION BOOTH LOST & FOUND

Opposite the Administration Centre



#### NEED CASH?

ATM services are available opposite the Administration Centre.



#### ADMISSION

Gate Admission - Adults: \$20

Students u/18 and Children free.

*Tickets now also available for purchase online as well as at the gates*



#### PARCEL PICK-UP SERVICE

Purchased goods can be picked up at the Goods Depot adjacent to Gate 7 - refer to site map.



#### SPECIAL EVENTS TIMETABLE

There is an action packed program organised across the two days. Refer to page 5 for details.



#### NO DOGS PERMITTED

On site.

While every effort has been made to ensure all content is correct and accurate, the publishers and Riverland Field Days Committee may not be held liable for any changes or inaccuracies.

The Riverland Field Days Official Programme may not be reproduced in any form without the written consent of the Manager. Editorial and graphics remain the property of the Riverland Field Days Committee. All rights reserved.

The Riverland Field Days Official program compiled and printed by J.C. Irving & Co. Pty Ltd, Renmark, South Australia, Phone 08 8586 8080.





# Chairman's Welcome...



Welcome to the 2023 Riverland Field Days.

We are proud and excited to bring the Riverland's largest event for you to enjoy. Showcasing the latest in new technology, exhibiting the old and providing entertainment, food and refreshments we are sure that there is something for everyone to enjoy.

If anything the last few years of covid have taught us, it's the importance of community and about simply being with each other. Which is why we are so excited to celebrate all that the Riverland has to offer at the 2023 Field Days. As so many of you know, Field Days started in the early settlers fruit blocks where the innovative thinking and hard work of our predecessors was shared for the benefit of all in our community. We are proud to continue this tradition,

by presenting today's forward thinking, proactive and community minded exhibitors and sponsors. We would like to recognise these exhibitors large and small and thank them for their efforts.

We have to acknowledge that there would be no Field Days without the people that attend on a yearly basis and we are grateful for your continued support and can't wait to enjoy the 2023 Field Days with all of you.

This event cannot run without the fantastic effort from our loyal and hardworking volunteers and committee members whose dedicated work makes for a seamless and enjoyable Field Days.

In closing, I would encourage everyone to come along to see what our exhibitors can offer, whilst enjoying a great day of attractions, entertainment, food and maybe a catch up with old friends.

See you there!

*Warren Mudge – Chairman, Riverland Field Days Inc.*

---

## WELCOME by Tim Whetstone, Member for Chaffey



I warmly welcome you to the 64th Riverland Field Days, one of the country's most successful and innovative agricultural forums. Each year people throughout the Riverland and Mallee look forward to one of the region's premiere events. Since 1958, the Riverland Field Days has enthralled locals and visitors alike, attracting over 15,000 annually people from interstate and intrastate.

The Riverland Field Days are an integral part of our Riverland and Mallee culture and the most authentic and accessible display of our regional farming and community life. This event holds immense social and economic value for our local communities and highlights the importance of sustainable agricultural production, which contributes more than \$14 billion to South Australia's economy.

The Riverland Field Days regularly hosts more than 15,000 attendees over the two days and an event of that size takes a considerable amount of organisation and preparation. It is a testament to the hard work and dedication of the committee and many volunteers whose dedication and vision ensures its continual success. I'd also like to mention the individual and community organisations who provide assistance and support before, during and following the event.

The event's reputation has continually grown as a quality supplier of horticultural and agricultural tools. From its inception, the Riverland Field Days have been a conduit for farmers to collaborate and discuss the latest technologies and techniques in the agricultural and horticultural realm. The ever-changing face of these industries means that farmers are constantly reevaluating practices seeking the most efficient way to grow and market their produce.

Visiting the Riverland Field Days also provides an opportunity to experience the rest of this great region. A new generation of food and wine establishments has emerged, we have an abundance of award-winning restaurants, breweries, distilleries, and cellar doors, all set close to the banks of the majestic River Murray. If you are visiting, I encourage you to take some time to explore the unique tourism experiences on offer.

My electorate office will be located at the Riverland Field Days on September 15 and 16, so please feel free to drop by and have a chat with me.

I look forward to seeing you there.

A handwritten signature in blue ink that reads "T. Whetstone".

*Tim Whetstone MP  
Member for Chaffey*





# Contents

|                                 | Page |   | Page |
|---------------------------------|------|---|------|
| Visitor Information.....        | 1    | Beers, Wines & Ciders .....                 | 14   |
| Field Days Site Location.....   | 1    | Caravans, Campers &<br>4x4 Section.....     | 16   |
| Welcome .....                   | 2    | Pavilions Site Plan.....                    | 30   |
| Food & Drinks .....             | 4    | Site Map .....                              | 34   |
| Events & Entertainment .....    | 5    | Barmera Markets.....                        | 40   |
| Function Pavilion Exhibits..... | 6    | Exhibitors List.....                        | 46   |
| Field Days Safari .....         | 6    | Exhibitors Products<br>& Services List..... | 50   |
| Ag Art Wear Competition.....    | 8    | Riverland Field Days Partners .....         | 62   |
| Field Days Committee .....      | 10   |   |      |
| Home & Garden Section .....     | 12   |   |      |



# Advertiser Index

| BUSINESS   | PAGE    |  |                    |
|--|---------|--|--------------------|
| A.W.G. Diesel Repairs.....                       | 59      | Growers Services Pty Ltd.....                      | 55                 |
| AAA Socks .....                                  | 49      | Immanuel College .....                             | 45                 |
| Action Steel.....                                | 38      | Inspector General of Water Compliance .....        | 13                 |
| Angove Family Winemakers.....                    | 14 & 15 | KompleteCare Community &<br>Homecare Services..... | 8                  |
| Australian Frost Fans.....                       | 65      | Kubpower.....                                      | 41                 |
| Australian Motors.....                           | 44      | LaCruz Australia.....                              | 64                 |
| Bank SA .....                                    | 37      | Liberty Oil Australia.....                         | 51                 |
| Barmera Markets.....                             | 40      | Loreto College.....                                | 26                 |
| Barossa Offroad Campers & Accessories.....       | 28      | Mayfab Engineering.....                            | 28                 |
| Bentleys SA/NT.....                              | 39      | Motion.....  | 43                 |
| Big River Toyota & Nissan & Isuzu Ute.....       | 17      | Murraylands & Riverland Landscape Board .....      | 20                 |
| Brett's Tools .....                              | 64      | Olympic Industries.....                            | Inside Back Cover  |
| Bunnings.....                                    | 9       | Opal.....  | 23                 |
| CMV Trucks & Parts.....                          | 63      | Origin.....  | 7                  |
| Davidson Motors.....                             | 21      | Pembroke .....                                     | 29                 |
| Edwards Group - Waikerie Lifestyle Village ..... | 47      | Phytech.....                                       | Inside Front Cover |
| Emmetts.....                                     | 47      | Pickering Transport .....                          | 43                 |
| Flight Motors.....                               | 57      | PIRSA.....   | 8                  |
| Flinders University.....                         | 42      | Prince Alfred College.....                         | 22                 |
| FSP Oz Products .....                            | 27      | Rev It Up Racing.....                              | 18                 |
| G & J East Pty Ltd.....                          | 42      | Rivergum Christian College.....                    | 20                 |
| Gallard Group.....                               | 24 & 25 | Riverland Fire & Safety.....                       | 55                 |
| Good Money.....                                  | 31      | Riverland Life FM.....                             | 28                 |
|  |         | Riverland Radio 5RM & Magic.....                   | 33                 |
|  |         | Riverland Secondary Schools Alliance.....          | 53                 |
|  |         | Ronco Motors.....                                  | 65-67              |
|  |         | SA Power Networks.....                             | 47                 |
|  |         | Sacred Heart College.....                          | 53                 |
|  |         | SafePower Safety Systems .....                     | 65                 |
|  |         | SES Riverland.....                                 | 51                 |
|  |         | SheerSpeed Shearing Products.....                  | 55                 |
|  |         | Sparnon Rural Pty Ltd.....                         | 20                 |
|  |         | St Francis of Assisi College.....                  | 39                 |
|  |         | St Peters College .....                            | 27                 |
|  |         | Think Road Safety.....                             | 18 & 19            |
|  |         | Tim Whetstone, MP.....                             | 6                  |
|  |         | Tony Pasin, MP.....                                | Outside Back Cover |
|  |         | Veterans SA.....                                   | 32                 |
|  |         | Vinotech Machinery.....                            | 68                 |
|  |         | Waikerie Honda.....                                | 44                 |
|  |         | Wake Watersports.....                              | 26                 |
|  |         | Walford School.....                                | 42                 |
|  |         | WESS Welding Equipment Sales & Service.....        | 11                 |
|  |         | Wilderness School .....                            | 32                 |
|  |         | WIN TV.....  | 36                 |
|  |         | WSB Distributors.....                              | 61                 |

## FOOD COURT 1

### Natura Icecream Bar

Icecream, Sorbet, Milkshakes & Kranskis

### Chipalicious

Fish & Cips, Satay Beef, BBQ Pulled Pork, Chilli Con Carne

### Orexii - Greek Souvlaki

Souvlaki in pita bread, Falafel, Saganaki, Hot Chips

### Crave Catering

Beef Burgers, Popcorn Chicken, Pork Ribs, Seafood Laksa, Chips

### Wunkar Community Soldiers Memorial Hall

Drinks Van

## FOOD COURT 2

### Cool Cone

Soft Serve Icecream, Gelati, Coffee & Tea

### Mishes Kitchen

Vietnamese Cuisine

### The Wedgie Barn

Gourmet Wedges & Fries, Nachos

### Loxton Horse Riding Club

Drinks Van

## THE HUT FOOD COURT

### Pete's Mobile

Woodfire Pizzas

Pizza

### Mario's Number 1 Coffee

Coffee

### Portland Smokehouse

Brisket Roll, Pulled Pork Roll, Vegetarian Nachos

### Maxine's Baked Potatoes

Baked Potatoes & Nachos

### Get Slushed

Frozen Slushie Drinks

### Whippd

Ice cream varieties

### Royal Flying Doctors

Drinks Van

## PAVILION/ MARQUEE FOOD COURT

### Strawberries Galore

Strawberries, Icecream & Sweets

### Niks Gourmet Kitchen

Baked potatoes, Hot dogs, Texas Smoke Rib Packs

### Mr Supersoft

Icecream

### Little Miss Daisy

Coffee, Milkshakes & Desserts

### The Honey Puff Lads

Greek sweets, Donuts

### Womens and Childrens Hospital Auxiliary

Drinks Van

## FOOD COURT 5

### Squid Squad Seafood

Seafood & Chips

### ZOOM Juice

Coffee, Donuts, Icecream, Desserts, Drinks

### Kingston-on-Murray Hall Association

Egg & Bacon Sandwiches, Sausage Sizzle

### Atomic Food

Spring Rolls, Satay Skewers, Pork Belly, Chips



## Field Days Dining Café

Enjoy dining in air conditioned comfort

In the Function Pavilion





## BankSA Stage Program

### FRIDAY

10.00am Ag Art Fashion Parade  
11.00am Rivergum College  
11.45am Waikerie High School  
12.45pm Loxton High School  
1.45pm Ag Art Fashion Parade  
2.30pm Sacred Heart College

### SATURDAY

9.30am Sacred Heart College  
12.00pm Ag Art Fashion Parade  
2.00pm Ag Art Fashion Parade  
3.00pm Bentley's Interview



### Marianna the Mermaid

Site 420 – 10.00am & 2.30pm each day

See the advert on page 9

### V8 Lawn Mower Challenge

Site 950 in 9th Avenue

Sponsored by Eastside Bearing & Brake Supplies

Challenge heats will be on at 11.00am, 1.00pm & 3.00pm each day

### Children's Pony Rides

Site 916 – During Saturday only

### Vintage Tractors & Machinery

Site 750 – Vintage tractor parade 12 noon and 2.00pm each day

### Sheep Dog – Working yard dog demonstration

Site 259 – 10.00am, 12 noon, 2.00pm & 4.00pm each day

### Blacksmiths Artists

Site 744 – Working during both days

### Wildlife Display & Presentations

Site 409 – Sponsored by the Inspector General Water Compliance. See the advert on page 13

### Jamie & Kim's Mobile Zoo

Site 225 – See the advert on page 23



### Race Car Simulator

Site 506 – Sponsored by Flight Motors

See the advert on page 18

### Barmera Lake Bonney Quilters

Function Pavilion – Quilting display

### Riverland Vintage & Classic Car Display – Site 141

### Riverland Artists

Function Pavilion – Display and demonstration

### Tastes of the Riverland

Function Pavilion – Home grown/made specialties

## Function Pavilion Exhibits



- 23rd Street Distillery
- Artists of the Riverland
  - Art display & demonstrations
- Barmera Lake Bonney Quilters
  - Quilting display
- Bassham Wines
- Jachmann Apple Cider
- Lock 4 Distillery

## COME AND SEE TIM AT SITE 526B



**TIM**  
**WHETSTONE** MP  
MEMBER FOR **CHAFFEY**

08 8582 4230    chaffey@parliament.sa.gov.au  
 @TimWhetstoneMP    www.timwhetstone.com.au  
 /TimWhetstoneMP    13 Kay Avenue, Berri SA 5343

## EARLY BIRD GATE TICKETS

# \$18

(Tickets  
online  
\$20)

Are available from the following outlets during business hours:

**Barmera** - Barmera Visitor Centre

**Berri** - Berri Visitor Centre

**Waikerie** - Woody's Variety Store  
No. 1 Home and Gifts

Up to 5.00 pm on Thursday 14<sup>th</sup> September

Tickets will **NOT** be available from these outlets on Friday or Saturday of the Field Days.

## FIELD DAYS SAFARI

Join Archie the Giraffe for a roaring treasure hunt.

Follow the trail to explore hidden gems and collect unique gifts.

It's going to be wild!

**GRAB YOUR PACK FROM SITE 503**



SITE P84



Call Origin LPG on **13 35 74**



See the  
**Artist  
Blacksmiths**  
at work on  
**site 744**



**V8**

**LAWN MOWER  
CHALLENGE**

**9th Avenue near Gate 4**

***See V8 enthusiasts test  
their engines on the track  
in "lawn mowers"***

**Sponsored by  
Eastside Bearing & Brake Supplies**



**KompleteCare**  
Community and Home Care Services

Australia's leading Disability & Aged Care In-home and Community service provider. Dedicated to providing the Riverland community with quality care for you or your loved one.

- Personal Care
- In-Home Respite
- Overnight Care
- Nursing Services
- Domestic Services
- Social Support
- Meal Prep
- Home Modifications
- Home & Garden Care
- Medication Assistance
- Transport
- Shopping Assistance

For your **FREE** in-home consultation, call us today  
(08) 7092 2211

Website [www.kompletecare.com.au](http://www.kompletecare.com.au)



REGISTERED  
NDIS  
PROVIDER

**SITE  
P50**



# PIRSA

Have a question?  
Make sure you visit us at site 313-315.

A range of PIRSA staff, as well as our external exhibitors, will be there to answer your questions about biosecurity, SA wild dog control, farming practices, fishing regulations and more.

**Drop by for a chance to win a hamper filled with local produce worth \$300.**

## PIRSA exhibitors

- Fruit Fly Response, Biosecurity SA
- Invasive Species Unit, Biosecurity SA
- Fisheries and Aquaculture
- SARDI Aquatic Sciences
- SA Drought Hub

## External exhibitors

- drumMUSTER
- Marine Safety SA
- SafeWork SA
- Small Business Commissioner SA
- Rural Aid

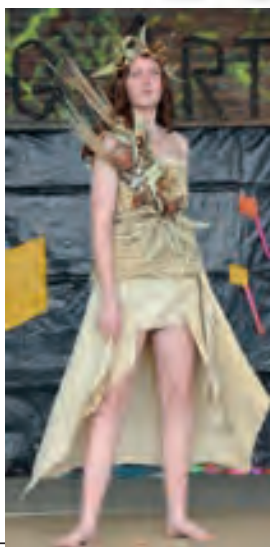


Government  
of South Australia

Department of Primary  
Industries and Regions



## Wearable-Art designed by talented Riverlanders



### AG-ART WEAR:

made from materials of an agricultural and/or horticultural nature as produced or found on a farm or block.

### Up-CYCLED WEAR:

made from products of a recycled/used nature.

**Come and see the creativity for yourself at  
10.00am and 1.45pm Friday and  
12.00pm and 2.00pm Saturday.**

**Winners announced at the final parade  
on Saturday.**

Find us on  
Facebook

**Riverland  
Ag-Art**





# BUNNINGS

Come, see us at sites 411-415

## MARIANNA the mermaid

10am - 2.30pm Friday & Saturday

10.30am StoryTime

11.30am Treasure Hunt

1pm StoryTime

2pm Mermaid Dance Party

**SITE 420**

Activities will run for 15 minutes each and Marianna and her pirate friend will be available for photos, mermaid questions and temporary tattoos in between!



# The Committee & Coordinators



*Warren Mudge (Chairman)  
is a painter and fruit grower  
from Barmera*



*Emma Gwiazda  
Manager Riverland Field  
Days and Events Centre*



*Ian Webber is a winegrape  
grower from Monash*



*Stirling Sykes is an  
electrical contractor from  
Renmark*



*Brenton Schober is a  
dryland farmer from New  
Residence*



*John Plush is a Winkie  
grape and citrus grower*



*Anthony Fulwood is a citrus,  
winegrape and avocado  
grower from Waikerie*



*James Butler is a winegrape  
grower and agricultural  
consultant from Renmark*



*John Spronk is a grower  
and fabricating engineer  
from Loveday*



*Wes Kalisch  
is a dryland farmer  
from Lowbank.*

The running of an event as large as the field days requires not only a lot of planning; but also a lot of people with tasks and responsibilities to perform. The many tasks have been grouped and a coordinator appointed to take responsibility in a particular group. The following are the Coordinators and their respective duties:

|   |  |
|---|--|
| Site Co-ordinator -                       | <i>Anthony Fulwood</i>                     |
| Assistant Site Co-ordinator -             | <i>John Plush</i>                          |
| Site Security Co-ordinator -              | <i>John Plush</i>                          |
| Site Safety Co-ordinators -               | <i>Joe Meek &amp; Ian Webber</i>           |
| Forklift Coordinator -                    | <i>Brent Walkington &amp; Warren Mudge</i> |
| Gate Coordinator -                        | <i>James Butler</i>                        |
| Catering Coordinator -                    | <i>Ian Schober</i>                         |
| Stage Coordinator -                       | <i>Lance Gum</i>                           |
| Pavilions Coordinator -                   | <i>Joe Meek</i>                            |
| Friday Social Function Coordinator -      | <i>Warren Mudge</i>                        |
| Traffic & Parking Coordinators -          | <i>Wes Kalisch &amp; Matt Lange</i>        |
| Cashier Coordinator -                     | <i>TBA</i>                                 |
| Information Desk Coordinator -            | <i>TBA</i>                                 |
| Parcel Pick Up Coordinator -              | <i>Shaun Arnold</i>                        |
| Waste Management Coordinator -            | <i>John Spronk</i>                         |
| Amenities Monitoring Coordinator -        | <i>David Jordan</i>                        |
| Ag Art Wear Competition Coordinators -    | <i>Sarah Plush</i>                         |
| Invited Guests Host -                     | <i>Sue Meek</i>                            |
| Electrical Services Coordinator -         | <i>Anthony Fulwood</i>                     |
| Straw Delivery Coordinator -              | <i>Dwayne Leske</i>                        |
| Clean-up & Packing Up Coordinator -       | <i>TBA</i>                                 |
| Highway Signs / Date Change Coordinator - | <i>Wes Kalisch</i>                         |

**HOW TO CONTACT US - T: 08 8588 2311 M: 0409 099 122**

**E: [admin@riverlandfielddays.com.au](mailto:admin@riverlandfielddays.com.au) W: [www.riverlandfielddays.com.au](http://www.riverlandfielddays.com.au)**



# RIVERLAND FIELD DAYS

COME SEE US  
**SITE 435**



## Showcasing WIA Next Generation Welders



South Australia's largest independent welding distributor for sales, service, hire and repair.

Stocking a wide range of brands including WIA, Lorch, Cigweld, Lincoln, Speedglas, Pferd, Hypertherm and Shindaiwa, to name a few.

We specialise in metal fabrication including welding, cutting, grinding, fume control and safety.

***“Your One Stop Welding Shop”***

**Superior Range — Sales/Service/Hire/Repair — Expert Advice**

**W.E.S.S.**  
WELDING EQUIPMENT SALES & SERVICE

W.E.S.S. by Global Welding Technologies Group Pty. Ltd.  
107 Cormack Road Wingfield 5013, South Australia, Australia.  
Ph: +61 8 8243 2200  
wess.com.au A.B.N. 67 634 066 452

GET CONNECTED



# Home & Garden Section



The visitor can enjoy browsing the many Home & Garden exhibits.  
This page provides a 'quick find' check list of exhibits.

## INDOOR EXHIBITS

|                                 |     |
|---------------------------------|-----|
| 24/7 Solar & Battery .....      | M25 |
| Dynamic Sales (Tuperware) ..... | P34 |

## OUTDOOR EXHIBITS

|                                     |      |
|-------------------------------------|------|
| NGM Resource Marketing .....        | 102  |
| Roe-Aire Riverland .....            | 132  |
| Riverland Agri Services .....       | 146  |
| Barmera Markets .....               | 205  |
| More than Metal .....               | 216  |
| Mobility Mates .....                | 305  |
| RM Electronics .....                | 308  |
| Spitwater .....                     | 320  |
| Ronco Motors .....                  | 335  |
| Bunnings Berri .....                | 411  |
| Riverland Trailer Bins .....        | 414  |
| Peats Soils & Garden Supplies ..... | 419  |
| SA Gate Automation .....            | 423  |
| Lynmac Metal Art .....              | 439  |
| Elite Kegs & Coopering .....        | 519  |
| APR Tanks .....                     | 523  |
| Sparnon Rural Pty Ltd .....         | 623  |
| Safe Power Systems .....            | 525B |







Australian Government



Inspector-  
General of  
Water  
Compliance

13 44 92  
igwc.gov.au

The independent Inspector-General of Water Compliance (IGWC) is responsible for ensuring Basin States are complying with the *Water Act 2007* (Cth) and *Basin Plan 2012*.

### IGWC FUNCTIONS



#### Compliance

Determine Basin State compliance with sustainable diversion limits and water resource plans.



#### Enforcement

Has the power to act on unlawful conduct relating to the Water Act and the Basin Plan, including the Basin Plan water trading rules.



#### Oversight

Providing independent oversight of Basin States through regular audits and reviews. Also has the power to conduct inquiries.



#### Engagement

Actively engaging with the Basin community about water management through the field officer network.

Come chat to our field officers at site 235 to learn more about the IGWC.

Water's Edge Podcast



Subscribe today!

## Wildlife Display & Presentations

A fascinating presentation of  
Australian wildlife with  
informative and educational talks  
during each day.



SITE 409

# Wines, Spirits & Ciders



## OUTDOOR EXHIBITS

|                                  |     |
|----------------------------------|-----|
| One Forty One.....               | 450 |
| St Mary's Wines and Spirits..... | 241 |

## INDOOR EXHIBITS

|                              |     |
|------------------------------|-----|
| 23rd Street Distillery ..... | F10 |
| Angoves Pty Ltd .....        | M29 |
| Bassham Wines.....           | F1  |
| Cheeky Rascal .....          | M40 |
| Heaps Good Spirits .....     | M24 |
| Higher Vision .....          | P44 |
| Jackmann Apple Co.....       | F2  |
| Lock 4 Distillery .....      | F9  |



# ANGOVE

SINCE 1886

## FAMILY WINEMAKERS

### VISIT THE RIVERLAND'S OLDEST FAMILY-OWNED WINERY & DISTILLERY

The Angove family were pioneers of the Riverland region, establishing a winery and distillery in Renmark in 1910.

Today, the family continues its commitment to excellence. Angove Family Winemakers are Australia's leading organic grape grower and winemakers, and the St Agnes Distillery and Barrel Halls craft and mature Australia's most highly awarded brandy.

Visitors are welcome to taste a range of premium, multi-award winning Angove wines at the cellar door, located right in the beating heart of the winery. Tours of the St Agnes Distillery are also available daily, with bookings required in advance.

The cellar door is open 7 days a week and regularly hosts local artists and jewellery designers in addition to offering local produce for sale. We look forward to welcoming you soon.

**Angove Family Winemakers Cellar Door**  
**271 Bookmark Ave, Renmark | Ph 8085 3148**



# The Riverland's Oldest Family Owned Winery & Distillery

**SITE M29**



## **CELLAR DOOR SALES & TASTING**

Mon - Friday 10am - 5pm  
Saturday 11am - 4pm  
Sunday 11am - 4pm

Bookmark Avenue, Renmark  
Ph 8580 3148  
[angove.com.au](http://angove.com.au)

## **Visit the regions original Craft Distillery**

### **Tour the St Agnes Distillery**

Tours operate daily at 11.30am  
(exc Sunday)  
Bookings Essential

Bookmark Avenue, Renmark  
08 8580 3148

# **STAGNES**

DISTILLERY AND BARREL HALLS  
[stagnesdistillery.com.au](http://stagnesdistillery.com.au)



# Caravans, Campers & 4x4 Section



## *Take the advantage...*

Come and see a great range of caravans, camper trailers, 4x4 and equipment on display.

This is an excellent opportunity to discuss and plan your recreation future.

|                                    |     |
|------------------------------------|-----|
| Big River Toyota .....             | 706 |
| Bunnings Berri .....               | 411 |
| CMV Trucks & Riverland Parts ..... | 829 |
| Dario Caravans & Repairs .....     | 804 |
| Davison RAM .....                  | 646 |
| Duttons RAM .....                  | 231 |
| Far Horizon Campers .....          | 802 |
| Flight Motors .....                | 601 |
| MW Toolbox Manufacturing .....     | 416 |
| Noel's Island Star Caravans .....  | 801 |
| Performance Diesel Tuning .....    | 723 |
| RM Electronics .....               | 308 |
| Spitwater .....                    | 320 |







**Big River Toyota**

**SITE 706**

OLD STURT HIGHWAY, BERRI SA 5343  
P (08) 8582 2277  
E info@bigriverauto.com.au  
www.bigrivertoyota.com.au

**FIND US AT SITE #**



# THE IMPROVED HILUX ROGUE

**WIDER. TALLER. TOUGHER.**

Steadfast and rugged, Hilux has served generations of Australians for over 50 years. Today, the legendary ute is smarter, safer and tougher than ever.

**BIG RIVER**

**ISUZU  
UTE**

OLD STURT HIGHWAY, BERRI SA 5343  
P (08) 8582 5200  
E info@bigriverauto.com.au  
www.bigriverisuzuute.com.au



**LIVE YOUR  
OWN WAY**

Unlock your Adventure  
Go wherever adventure takes you with the power, performance and reliability of the D-MAX ute or 7-seat MU-X SUV.



**Big River Nissan**

OLD STURT HIGHWAY, BERRI SA 5343  
P (08) 8582 5200  
E info@bigriverauto.com.au  
www.bigrivernissan.com.au



**Best in class**

**DRIVE**  
CAR OF THE YEAR 2023

2023 DRIVE AWARDS  
BEST SMALL SUV  
2023 DRIVE AWARDS

Prepare to be moved

NISSAN  
INTELLIGENT  
MOVING

**ELITE X**  
EXTERIOR CERAMIC SURFACE PROTECTION



ADVANCED  
DURABILITY



PROTECTS AGAINST  
PAINT FADE



HIGH GLOSS  
MIRROR FINISH

ASK US HOW TO PROTECT YOUR CAR

**Tint-a-Car**



# "Too many of us die out here."



**2 in 3 deaths**  
**on country roads**  
**are country people.**

**THINK!**  
**ROAD**  
**SAFETY**



**TRY YOUR SKILL**  
**IT'S FUN IT'S EXCITING!**

Kids, teens and parents...  
Who is the fastest driver in  
your family? Try out the  
Rev It Up Racing Junior Racing  
Experience and find out!  
Race against each other on the  
virtual race track for ultimate  
bragging rights!

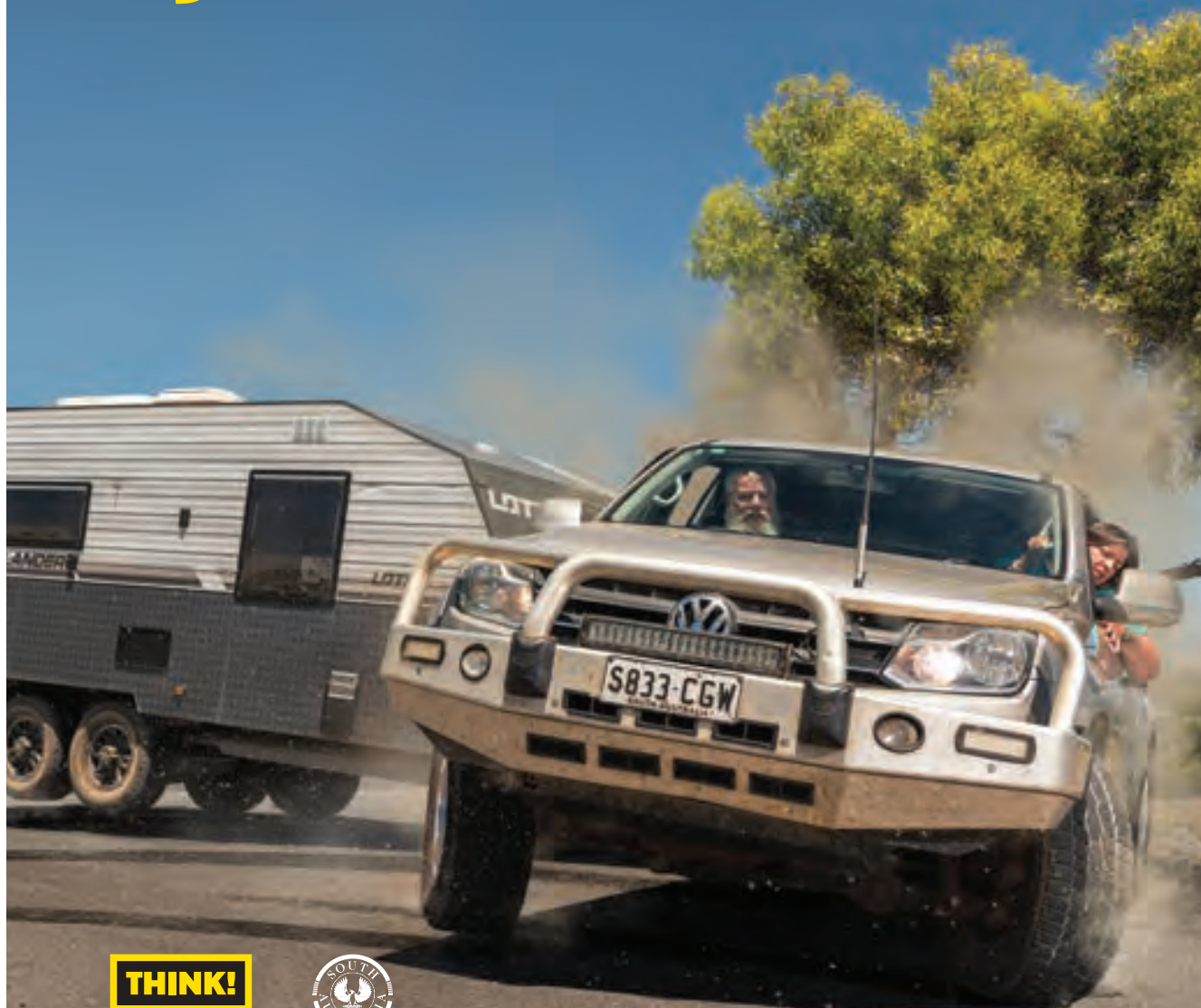
**SITE 506**

PROUDLY SPONSORED BY  
**FLIGHT MOTORS**





# Don't stop driving by accident.



**THINK!**

**ROAD  
SAFETY**



Government  
of South Australia

# Visit the Murraylands and Riverland Landscape Board

## There will be plenty to see and do!

- Advice on pest animal and weed management
- opportunities to become a citizen scientist
- learn about soil health and water management and why it is important for a sustainable future
- learn about environmental watering projects happening in our region
- learn about native animals with Animals Anonymous and their live animals display
- interactive activities for the kids.

Our staff are hoping to see you there so come along, say g'day and have your questions answered.

*site 202/204*



## SITE 623



### COME SEE US AT OUR SITE FOR ALL YOUR NEEDS

- Chemical • Animal Health products
- Finance • Agronomy services • Insurance
- Fertiliser • Consultations • Livestock
- General freight and bulk haulage



Enrolments Open

## EMPOWERING STUDENTS TO THRIVE

- ✓ Foundation to Year 12 on one site
- ✓ Affordable Christian education
- ✓ Passionate teachers
- ✓ Excellent facilities
- ✓ Bus service across the Riverland

**VISIT US AT**

**SITE 501**





# MILDURA **Davison Motors**

FORD

LDV

RAM

SHANGHAI

SUZUKI

**NEW & USED SALES // SERVICE  
PARTS // FINANCE**

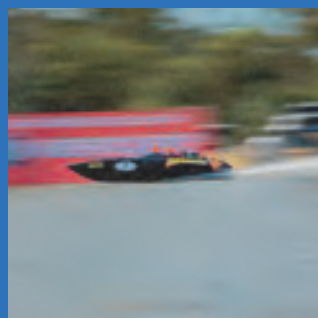
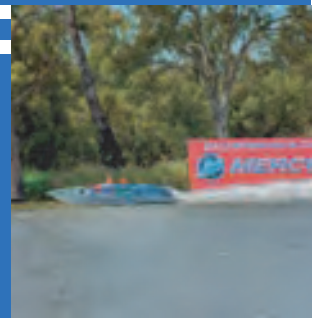


*We Deliver*  
**Australia Wide!**

Instagram Facebook @DAVISONMOTORSMILDURA

*We Support Our  
Local Community!*

**SITE 646**



**Davison Motor Firm**

(03) 5018 7400 | 705/711 Fifteenth Street Mildura

LMCT 6390



## A VENUE IDEAL FOR:

- Conventions & Presentations • Exhibition & Product Launches
- Caravan & Motor Rallies • Music Festivals
- Agricultural & Machinery Displays • Family Functions & Celebrations
- Community Group Events • Cooking & Social Groups • Workshops & AGMs

## WHAT THE RIVERLAND EVENTS CENTRE PROVIDES

### Grounds & Services:

- Over 500 powered sites
- 12.5 hectares of irrigated turf
- High standard security fencing
- 3 phase power in certain spots
- Water supplies (untreated)
- Large carparking areas
- Bitumen road access
- Flood lighting adjacent to buildings and at entrance gates
- Machine loading bays
- Outdoor concert stage
- The Hut - shelter structure
- 5 food court shelters with ample power supply

### Function Pavillion:

- Fully air conditioned - good acoustics
- The auditorium has seating for over 300
- Quality PA and data projection facilities
- Full commercial kitchen
- Drinks bar
- Seperate meeting room
- High standard amenities including disabled units.

### Exhibition Pavillion:

- Large building - 73m x 20m
- Concrete floor, large roller doors and lighting
- PA speakers installed

### Location:

- Located 3kms from Barmera in the heart of the Riverland
- Easy access from Sturt Highway

## Enquiries are welcome...

52 Field Day Drive (off the Sturt Highway), BARMERA SA 5345

**Contact address:** PO Box 204, BERRI SA 5343

**Phone:** 0409 099 122 or 08 8588 2311

**Email:** [admin@riverlandfielddays.com.au](mailto:admin@riverlandfielddays.com.au) **Website:** [www.riverlandfielddays.com.au](http://www.riverlandfielddays.com.au)



Join us at the Riverland Field Days, **Site No. 220**, and meet our Boarding and Admissions team to discuss enrolment opportunities for 2024 and beyond.

Start your Journey at **[pac.edu.au](http://pac.edu.au)**



**Opal is one of Australia and New Zealand's largest fibre packaging and paper companies.**

**Opal offers sustainable fibre packaging solutions to suit every customer.**

Opal proudly sponsoring the Field Days Wild Life display

[www.opalanz.com](http://www.opalanz.com)



**Thinking packaging.  
Discover Opal.**

Opal Fibre Packaging  
P.O. Box 433, Renmark SA 5341  
23 Gregory Road, Renmark SA 5341  
T: 08 8586 3438

**Opal.**



### **Site 225**

Jamie & Kim's Zoo provides interest and fascination for all ages, but especially for children.

It is a great opportunity to learn about our wonderful wild life; and to interact with the animals.



*Proudly sponsored by* **Opal Packaging SA/NT – supplying the Horticulture Industry**

# GALLARD GROUP

ARE NOW THE PROUD JCB DEALERS  
FOR THE RIVERLAND AND MALLEE

The JCB logo, featuring the letters 'JCB' in a bold, white, sans-serif font inside a black rectangular box with an orange border.

WE HAVE A FULL RANGE OF SPARE PARTS & WE CAN SERVICE YOUR MACHINE.  
INTERESTED IN SEEING WHAT JCB HAVE INTRODUCED IN THE PAST YEAR  
FOR SALES ENQUIRIES CONTACT – DREW GALLARD 0400 761 790  
FOR ALL SPARE PARTS AND SERVICE CALL 0477 900 225 OR 85821671



w | [gallardgroup.com.au](http://gallardgroup.com.au)  
e | [enquiry@gallardgroup.com.au](mailto:enquiry@gallardgroup.com.au)  
t | 08 8582 1671





# GALLARD GROUP

AGENTS FOR



**SEE US  
AT SITE  
333**



w | [gallardgroup.com.au](http://gallardgroup.com.au)  
e | [enquiry@gallardgroup.com.au](mailto:enquiry@gallardgroup.com.au)  
t | 08 8582 1671



DISCOVER YOUR NEXT BOAT AT...  
**RIVERLAND FIELD DAYS!**

**WAKE** WATERSPORTS



COME SEE US  
ON SITE #  
**627/629**



**ATX**  
SURF BOATS

**SUPRA**  
BOATS

**tigé**  
BOATS

**MOOMBA**  
BOATS



**Strength**



**Passion**



**Confidence**



**Enrol Now for Boarding in 2025**

**SITE  
P7**

**Educating strong, passionate and  
confident girls and young women**



**LORETO  
COLLEGE**  
Marryatville



## Join our exceptional community of learning

Visit us at the Field Days to meet our Boarding Team and learn about our welcoming and caring boarding environment that aims to challenge and develop students academically and personally.

Boarding enrolments are now open for 2024 and beyond.

Private tours of the School are always available.

Please call Amanda Bruce, Admissions Manager on 8404 0400 or email [admissions@stpeters.sa.edu.au](mailto:admissions@stpeters.sa.edu.au)

Find us at Site 61 Exhibition Pavilion

[stpeters.sa.edu.au](http://stpeters.sa.edu.au)



# Tough Plastic Fencing

## Plus Durable Plastic Products for Australian Farms



### Post and Rail Fence

- ▶ Light and flexible alternative to metal and timber
- ▶ No more painting - electric fencing compatible
- ▶ Rust, saltwater and UV resistant
- ▶ For Farming, Aquaculture, Fruit, Mining, Commercial



Patent: WO 2020/019021

### Reggie Post™

#### Advantages over Wooden Posts

- ▶ Break resistant when bent
- ▶ UV stabilised PVC
- ▶ No nails or clips
- ▶ No heavy metals
- ▶ Trimmer friendly
- ▶ Harvest more crop
- ▶ Light colour reflects light



### FSP Tweena®

#### Wire Fencing Plastic Strengtheners

- ▶ Replacement for wood or steel fence droppers (T-posts) and clips
- ▶ Rust, saltwater, UV resistant
- ▶ No more painting

### Rayly Post™

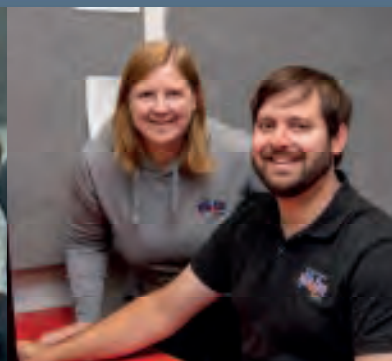
#### Tough Plastic Fencing

- ▶ Move-able wire slots
- ▶ Tee slot for easy attachment of accessories
- ▶ Wire slot built into the cap
- ▶ Heavier duty construction



Contact us now  
1300 735 093

[sales@fspozproducts.com.au](mailto:sales@fspozproducts.com.au)  
[www.fspozproducts.com.au](http://www.fspozproducts.com.au)



Mob 0417 248 000 ■ riverlandlife.org.au ■ facebook.com/riverlandlife ■ PO Box 1680 Loxton SA 5333

# BAROSSA OFFROAD

CAMPERS & ACCESSORIES

**Camper Sales  
Camper Servicing  
Camper Accessories  
Camper Hire  
4WD accessories  
Electrical & Gas work**

**ULTIMATE**  
Off Road Campers



**trayon**  
campers



**MITSUBISHI**  
EXPLORE WITH NO LIMITS

☎ **08 8522 1141**

✉ [info@barossaoffroad.com.au](mailto:info@barossaoffroad.com.au)

🌐 [www.barossaoffroad.com.au](http://www.barossaoffroad.com.au)

📍 U3/27 Theen Ave, Willaston SA 5118

**SITE  
806**



# MAYFAB ENGINEERING

- Specialising in Pipe & Tube Installations
  - Certified Welding
- Industrial Refrigeration & Steam Pipework
  - Engineering Design & Consultancy
  - Project Management
- General Engineering & Equipment Installations
- Programmed Shutdowns • Repairs & Maintenance
  - Labour Hire • Machinery Hire

**Shane May**

Manager

**0414 707 701**

**[shane@mayfab.com.au](mailto:shane@mayfab.com.au)**

Kingston-on-Murray, South Australia

**Servicing the Wine, Food, Mining  
and Agricultural Industries**





# Pembroke

Visit us at Site P40/P41,  
Exhibition Pavilion

Scholarships are available annually  
for boarding; applications for 2025  
Scholarships open in September 2023.

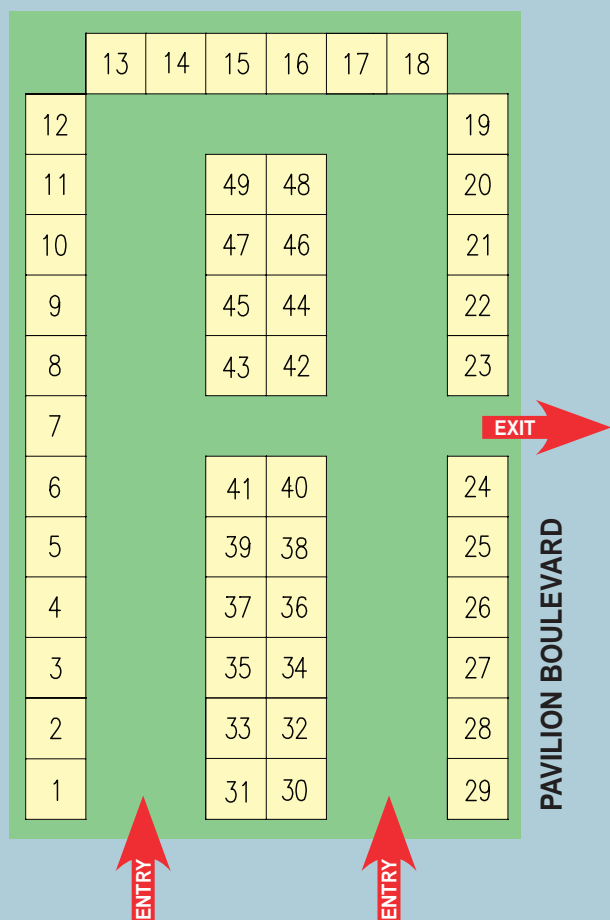
Visit:  
[www.pembroke.sa.edu.au/boarding](http://www.pembroke.sa.edu.au/boarding)  
to find out more.

Located in Adelaide's eastern suburbs, Pembroke School is a co-educational, non-denominational, day and boarding school from Early Learning Centre to Year 12. Pembroke School offers the South Australian Certificate of Education (SACE) and is also an International Baccalaureate (IB) World School, offering the IB Diploma and the Primary Years Programme (PYP).

Boarding is a unique opportunity to live in a strong and diverse community. Pembroke provides outstanding care for students from around Australia and the world in an atmosphere that is friendly, welcoming, supportive and fun.

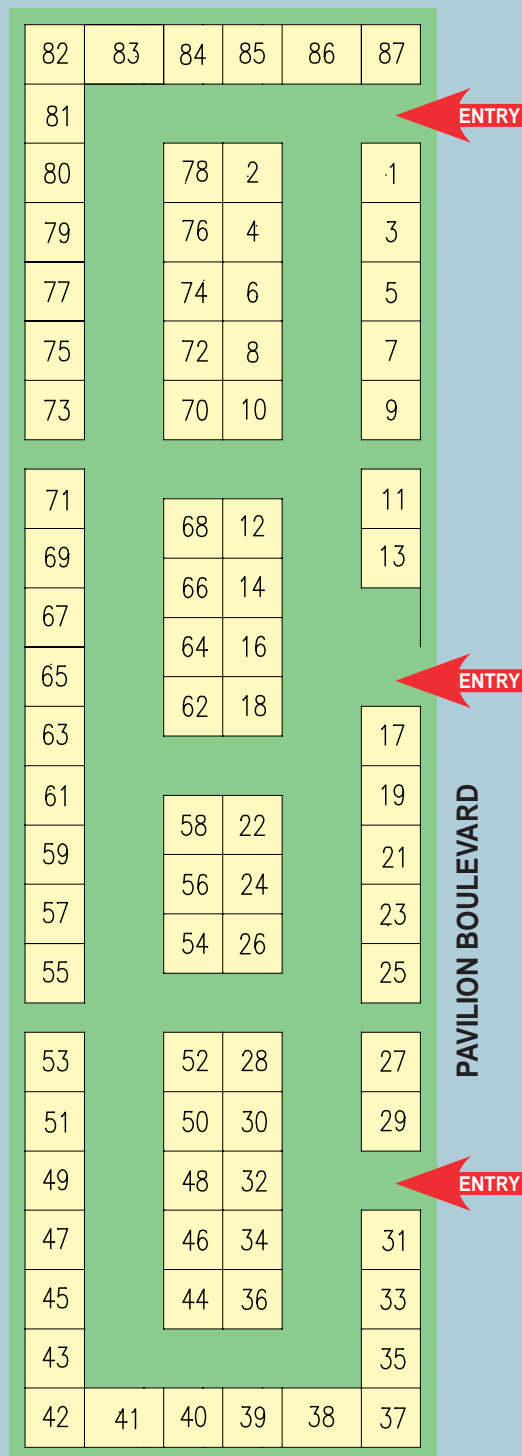
*"Living in the boarding house makes me feel like living at home. There are many lovely house supervisors who help us with everything, and they are like our friends as well. Three years of boarding life has slipped away so fast and now I have to say goodbye to these unforgettable experiences."*

Cathy (2019 Leaver)



## Marquee Pavilion

Site Numbers have the prefix 'M'



## Exhibition Pavilion

Site Numbers have the prefix 'P'



# No Interest Loans



**Pay back only what you borrow.**

**No fees. No charges. EVER.**

**Borrow up to \$2000 for essentials, and up to \$3000 if you have been affected by natural disaster.\***



**Good Money**  
Berri, Salisbury, Murray Bridge, Mannum  
1300 770 550  
[goodmoney.com.au](http://goodmoney.com.au)

**FIND OUT MORE**



Brought to you by:



Funded by:



Australian Government  
Department of Social Services

Funded by:



Government of  
South Australia

In partnership with:



\*No Interest Loans are not available for cash. Income eligibility applies. See eligibility criteria at: [goodmoney.com.au](http://goodmoney.com.au)

**SITE M9**

# SHE WILL

Within a Wilderness boarding experience lies a unique opportunity for each girl to achieve her potential. Anywhere she wants to go, anyone she wants to be – she can and she will.

## DISCOVER MORE

Join our Wilderness staff at the Riverland Field Days to learn more about boarding at Wilderness School.

[wilderness.com.au](http://wilderness.com.au)



**SITE  
P72**

## We look forward to meeting you

At Veterans SA, we envisage a strong, vibrant, well-supported and represented veteran community and we are excited to have the opportunity to meet with local veterans and their families at the 2023 Riverland Field Days.

We are collaborating with ex-service organisations to bring information and services directly to veterans and their families. Our partners will be available to provide face-to-face advice and information as well as enable connections with other service providers who can offer further support.

IN PARTNERSHIP WITH



**VeteransSA**

[veteranssa.sa.gov.au](http://veteranssa.sa.gov.au)


**SITE  
P57**





**The official Riverland Field Days radio broadcaster keeping you up to date on all that's happening at the Riverland Field Days in 2023!**



Disabled Parking  **PUBLIC GATE 3**

**GATE 2**

**Helicopter Rides**

**GATE 4**

**GATE 6**

**GATE 1**

**GATE 5**

**GATE 8**

**GATE 7**

**PARCEL PICKUP**

**GATE 2**

**GATE 4**

**GATE 1**

**GATE 5**

**GATE 8**

**GATE 7**

**PARCEL PICKUP**

**GATE 2**

**GATE 4**

**GATE 1**

**GATE 5**

**GATE 8**

**GATE 7**

**PARCEL PICKUP**

**GATE 2**

**GATE 4**

**GATE 1**

**GATE 5**

**GATE 8**

**GATE 7**

**PARCEL PICKUP**

**GATE 2**

**GATE 4**

**GATE 1**

**GATE 5**

**GATE 8**

**GATE 7**

**PARCEL PICKUP**

**GATE 2**

**GATE 4**

**GATE 1**

**GATE 5**

**GATE 8**

**GATE 7**

**PARCEL PICKUP**

**GATE 2**

**GATE 4**

**GATE 1**

**GATE 5**

**GATE 8**

**GATE 7**

**PARCEL PICKUP**

**GATE 2**

**GATE 4**

**GATE 1**

**GATE 5**

**GATE 8**

**GATE 7**

**PARCEL PICKUP**

**GATE 2**

**GATE 4**

**GATE 1**

**GATE 5**

**GATE 8**

**GATE 7**

**PARCEL PICKUP**

**GATE 2**

**GATE 4**

**GATE 1**

**GATE 5**

**GATE 8**

**GATE 7**

**PARCEL PICKUP**

**GATE 2**

**GATE 4**

**GATE 1**

**GATE 5**

**GATE 8**

**GATE 7**

**PARCEL PICKUP**

**GATE 2**

**GATE 4**

**GATE 1**

**GATE 5**

**GATE 8**

**GATE 7**

**PARCEL PICKUP**

**GATE 2**

**GATE 4**

**GATE 1**

**GATE 5**

**GATE 8**

**GATE 7**

**PARCEL PICKUP**

**GATE 2**

**GATE 4**

**GATE 1**

**GATE 5**

**GATE 8**

**GATE 7**

**PARCEL PICKUP**

**GATE 2**

**GATE 4**

**GATE 1**

**GATE 5**

**GATE 8**

**GATE 7**

**PARCEL PICKUP**

**GATE 2**

**GATE 4**

**GATE 1**

**GATE 5**

**GATE 8**

**GATE 7**

**PARCEL PICKUP**

**GATE 2**

**GATE 4**

**GATE 1**

**GATE 5**

**GATE 8**

**GATE 7**

**PARCEL PICKUP**

**GATE 2**

**GATE 4**

**GATE 1**

**GATE 5**

**GATE 8**

**GATE 7**

**PARCEL PICKUP**

**GATE 2**

**GATE 4**

**GATE 1**

**GATE 5**

**GATE 8**

**GATE 7**

**PARCEL PICKUP**

**GATE 2**

**GATE 4**

**GATE 1**

**GATE 5**

**GATE 8**

**GATE 7**

**PARCEL PICKUP**

**GATE 2**

**GATE 4**

**GATE 1**

**GATE 5**

**GATE 8**

**GATE 7**

**PARCEL PICKUP**

**GATE 2**

**GATE 4**

**GATE 1**

**GATE 5**

**GATE 8**

**GATE 7**

**PARCEL PICKUP**

**GATE 2**

**GATE 4**

**GATE 1**

**GATE 5**

**GATE 8**

**GATE 7**

**PARCEL PICKUP**

**GATE 2**

**GATE 4**

**GATE 1**

**GATE 5**

**GATE 8**

**GATE 7**

**PARCEL PICKUP**

**GATE 2**

**GATE 4**

**GATE 1**

**GATE 5**

**GATE 8**

**GATE 7**

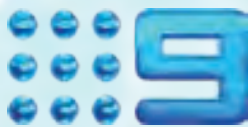


# MARKETING MADE SIMPLE, WITH WIN TV RIVERLAND

With the best of free to air tv throughout the  
Riverland, Murray Mallee and Limestone Coast



**BOOK THE BIG THREE NETWORKS WITH US**



**Gem**

**Life**

**Go!**



**10 Peach**

**10 BOLD**



**7two**

**7mate**

**CONNECT YOUR BUSINESS WITH A TARGETED  
APPROACH**

**CHANGE, CONNECT, GROW**

Gail Campain  
[campaign@winnetwork.com.au](mailto:campaign@winnetwork.com.au)  
08 8580 8699

**WIN**  
TELEVISION  
SALES

# We back **SA** Field Days.

Proudly presenting the  
BankSA Performing Arts Stage  
at the Riverland Field Days.







# **YOUR TRUSTED FARM SHED COMPANY IS EXHIBITING!**

**Come and see us at site 631-633**



**ACTIONSTEEL.COM.AU**

**PH: 1800 687 888**



# BRAVE. BOLD. FUTURE.

See us chat live on stage at  
the Riverland Field Days

Visit us at site 239



- Advisors
- Accountants
- Auditors

## Getting your business where you want to be.

With over 40 years experience in SA our  
agribusiness specialists will help you get  
where you want to be.

Whatever your goals for your business, the team at  
Bentleys will take the time to understand and support  
your vision and aspirations and offer solutions for a  
changing landscape.

- ESG and carbon farming
- Succession planning
- Cashflow, finance and tax planning
- Structuring and restructuring your agribusiness
- Superannuation, estate & wealth planning

[bentleys.com.au](http://bentleys.com.au) | [advice@adel.bentleys.com.au](mailto:advice@adel.bentleys.com.au) | 08 8372 7900

# Discover your local Catholic school...

## Reception to Year 12 education for the Riverland

Visit us at **Stands P62 & P64**



[cesa.catholic.edu.au/riverland](http://cesa.catholic.edu.au/riverland)





# Barmera Markets

**AT THE  
FIELD DAYS!**

**SEE US AT SITES  
205, 207, 106 & 108**

Clothing • Condiments • DVDs • Craft • Woodwork  
• Jewellery • Bric a Brac • Books Furniture • Fruit  
• Vegetables • Homewares • Plants • Food

Visit beautiful Barmera and take in the views of Lake Bonney while strolling through the popular Barmera Markets on the lakefront.

1st October 2023  
5th November 2023  
3rd December 2023  
Open from 9am - 1pm

*For more information  
please contact the*

Barmera VIC Ph: 08 8588 2289  
[vic@barmeratourism.com.au](mailto:vic@barmeratourism.com.au)

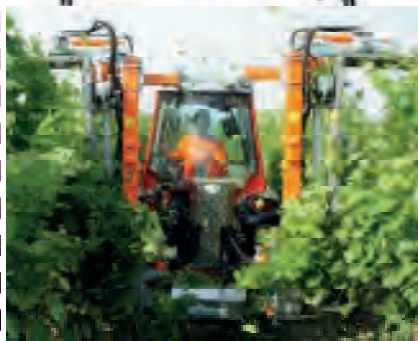


# Kubota



**TOW AND BLOW**

**Landini**



## KUB power

## SITE 140

**CONSTRUCTION | AGRICULTURE | TURF | POWER**  
[kubpower@kubpower.com.au](mailto:kubpower@kubpower.com.au) | [www.kubpower.com](http://www.kubpower.com)



## THE KEY TO SUCCESSFUL VINEYARD MANAGEMENT CLEMENS RADIUS SL PLUS UNDERVINE WEEDER

- The eco-friendly alternative to chemical weed control
- Sensitive feelers for clean working around the vine
- Weeds rot in a natural manner
- Less drought stress
- Can be fitted with various under-vine working tools



**Flinders University**

Rural & Remote Health SA



## Join us at the Riverland Field Days

Find out about pathways to your future health career, our diverse range of degrees, chat to academics and learn what it's like to study at Flinders.

Flinders University Rural  
and Remote Health SA  
Ral Ral Avenue Renmark  
Ph: (08) 8586 1000  
Exhibition Pavillion

**SITE P29**

[Flinders.edu.au/health](http://Flinders.edu.au/health)

©2020 Flinders University

## Her Best | Her Way

Discover the difference.

**Walford is a place for our students to experience the joy of learning and be part of a flourishing community, a place where each student will thrive.**

Students are fully supported in their transition to Walford and to life in the Boarding House. Their developmental, educational and wellbeing needs are nurtured in a stimulating environment.

At Walford, students discover their talents and special interests, find their love of learning, grow their self-knowledge and confidence and prepare for the future through engaging learning.

To visit Walford and discover the difference, come and see the Head of Enrolments, Alice Scott, in the Exhibition Pavillion.

[walford.sa.edu.au](http://walford.sa.edu.au)

Walford Anglican School for Girls  
316 Unley Road, Hyde Park SA 5061  
CRICOS Provider No. 00563J

**Walford**  
est. 1893  
Celebrating 130 Years 1893-2023

**SITE P3**



# PICKERING TRANSPORT GROUP



## TRANSPORT SPECIALISTS

**RENMARK TO ADELAIDE & MELBOURNE DAILY  
SERVICING BRISBANE AND SYDNEY AS REQUIRED**

*Servicing... Renmark, Berri, Barmera, Loxton & Waikerie*



**- General & Container Transport - Side Loader Hire**

**Ph 8586 2000 • [www.ptg.com.au](http://www.ptg.com.au)**

# **MOTION**

**VISIT US AT SITE 327-329**

- Header Front Parts
- Header Parts
- PTO Clutch & Gearbox Parts
- Hydraulic Parts & Onsite Services
- Tractor Attachment & Hitch Systems

**SERVICING THE  
AUSTRALIAN  
AGRICULTURE  
MARKET SINCE 1921**





# waikerie HONDA

**SITE 338**

**Sturt Highway, Waikerie SA 5330**

**Ph: (08) 85412500 Mobile: 0409811158**

**Email: [wkhonda@bigpond.net.au](mailto:wkhonda@bigpond.net.au)**

**[www.waikeriehonda.com](http://www.waikeriehonda.com)**

**For all your Sales and Servicing of all these quality brands**



**HUSTLER**  
TURF EQUIPMENT

**MERCURY**



**HONDA**

**STIHL**




MAHINDRA



MAHINDRA  
PIKUP

|                  |   |                  |                          |                  |                           |
|------------------|---|------------------|--------------------------|------------------|---------------------------|
| <b>5</b><br>YEAR | <b>150K</b><br>WARRANTY<br><small>ON SEL AT DC PICKUP</small> | <b>4</b><br>YEAR | <b>CAPPED</b><br>SERVICE | <b>5</b><br>YEAR | <b>ROADSIDE</b><br>ASSIST |
|------------------|---|------------------|--------------------------|------------------|---------------------------|

**MAHINDRA WAYVILLE**



**SCORPIO**

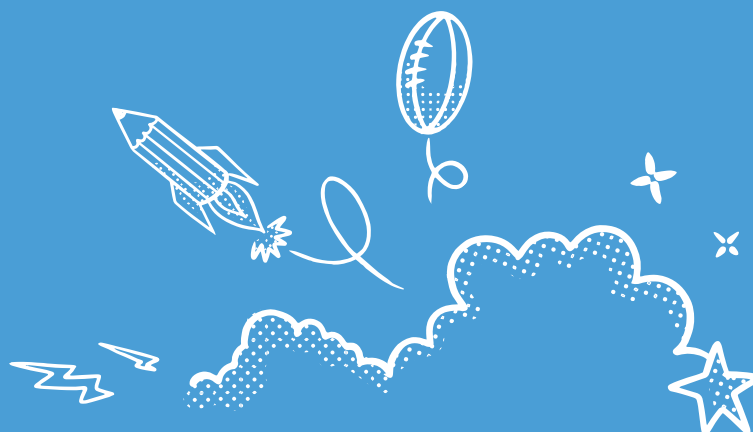
|                  |                               |                  |                          |                  |                           |
|------------------|-------------------------------|------------------|--------------------------|------------------|---------------------------|
| <b>7</b><br>YEAR | <b>150,000</b><br>km WARRANTY | <b>5</b><br>YEAR | <b>CAPPED</b><br>SERVICE | <b>7</b><br>YEAR | <b>ROADSIDE</b><br>ASSIST |
|------------------|-------------------------------|------------------|--------------------------|------------------|---------------------------|

## ENGINEERED FOR ADVENTURE

South Australia's first Mahindra dealership. We offer a range of light commercial 4x4 Dual Cab Utes from \$37,990 DA and a range of SUV's including the Scorpio from \$41,990 DA and XUV700 from \$36,990 DA.

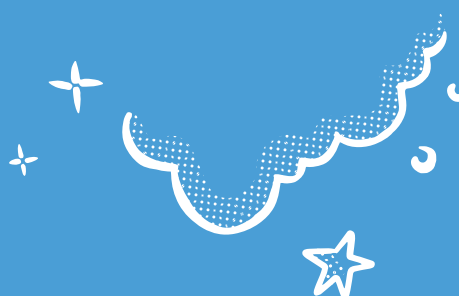
Find us at Site 550-554, 649-653.

Mahindra Wayville | 11 Goodwood Road, Wayville SA 5034 | (08) 84084144 | [mahindrawayville.com.au](http://mahindrawayville.com.au) | ^T&Cs apply, see [www.mahindra.com.au/ownership](http://www.mahindra.com.au/ownership) for details



# What if

home didn't feel  
so far away?



For us it's not about fitting in, it's about belonging.

Being seen, heard and valued as your true self.

With an inclusive boarding family, you build life-long connections  
with support that lasts beyond the day you graduate.

**Visit us at the Riverland Field Days, 15 & 16 September 2023  
to talk about Boarding at Immanuel College in 2025 & beyond.**

**SITE M1**



## Immanuel College

[immanuel.sa.edu.au](http://immanuel.sa.edu.au)



# Exhibitor List



| Name   | Site No. | Name                                   | Site No. | Name  | Site No. |
|--|----------|--|----------|---|----------|
| 23rd Street Distillery .....                   | F10      | Biosecurity SA -                       |          | G & J East (Strathalbyn) Pty Ltd .....              | 144      |
| 24/7 Solar & Battery .....                     | M25      | Fruit Fly Response .....               | 311      | Gallard Machinery .....                             | 333      |
| 5RM Radio .....                                | 15       | BPF Equipment .....                    | 836      | GJ Gardner Homes .....                              | 456      |
| AAA Socks .....                                | 302      | Brett's Tools .....                    | 131      | Good Money .....                                    | M9       |
| Access Septic Products .....                   | 551      | Bunnings Berri .....                   | 411      | Grain Producers SA Ltd .....                        | 239      |
| Action Steel .....                             | 631      | BUPA .....                             | P75      | Grower Services Pty Ltd .....                       | 559      |
| Add A Bathroom .....                           | 515B     | Butch's Small Goods .....              | P87      | Gutter Knight SA Pty Ltd .....                      | 412      |
| Adventist Development &<br>Relief Agency ..... | M45      | Carmen's Road Safety .....             | P31      | Heaps Good Spirits .....                            | M24      |
| Aeolis Leather .....                           | 233      | Changing Mindset Coaching .....        | P23      | HearClear Audiology .....                           | P18      |
| Aged Rights Advocacy Service .....             | P46      | Cheeky Rascal .....                    | M40      | Hearing Australia .....                             | 206      |
| Agromillora .....                              | P8       | Children's Safari .....                | 503      | Heavenly Beef Jerky .....                           | 322      |
| Akora Homes .....                              | P47      | Clesver Connections .....              | 132      | Hide and Horn .....                                 | P33      |
| AME Group Pty Ltd .....                        | 452      | Clover and Rose .....                  | P86      | Higher Vision .....                                 | P44      |
| Angoves Pty Ltd .....                          | M29      | CMV Trucks & Riverland Parts .....     | 829      | Hitachi .....                                       | 154      |
| APR Tanks .....                                | 523      | Cohuna Sports Store .....              | 219      | Homecare Plus .....                                 | P33      |
| Aquatic Weed Control .....                     | 620      | Collie Park .....                      | P6       | Hoods Agrimotive .....                              | 364      |
| Athena IR-Tech .....                           | 239      | Cowanna Almond Harvesting .....        | 355      | Hopebooks .....                                     | M48      |
| Audika Hearing Clinic .....                    | P48      | Cropify .....                          | 239      | Immanuel College .....                              | M1       |
| Aussie Popcorn .....                           | 334      | Dario Caravans & Repairs .....         | 804      | Inspector General for<br>Water Compliance .....     | 235      |
| Australian Frost Fans .....                    | 325      | Davison RAM .....                      | 646      | IntoJobs .....                                      | P38      |
| Australian Motors .....                        | 550      | Defence Health .....                   | M7       | Jackmann Apple Co .....                             | F2       |
| AWG Diesel Repairs .....                       | 736      | Dementia Australia .....               | P75      | Jad's Driver Training .....                         | 424A     |
| AxisTech .....                                 | 239      | Dial a Tow .....                       | 836      | Kaine Kraft .....                                   | 120      |
| Barmera Markets .....                          | 205      | Dollar Curtains & Blinds .....         | M31      | Kalleske Meats Pty Ltd .....                        | 402      |
| Barossa 4 X 4 & Outdoors .....                 | 711      | Drone Agricultural Remote Tech .....   | 936      | King Craft Tools .....                              | 135      |
| Barossa Auto Group .....                       | 823      | Duttons RAM .....                      | 231      | Kingspan Water Tanks .....                          | 332      |
| Barossa Helicopters .....                      | N/A      | Dynamic Sales (Tuperware) .....        | P34      | Kompletecare Community &<br>Homecare services ..... | P50      |
| Barossa Offroad Campers &<br>Accessories ..... | 806      | Dylan Forrest .....                    | 135      | Kubpower .....                                      | 140      |
| Basic Trailers .....                           | 724      | Edwards Group -                        |          | La Vista Caravans .....                             | 917      |
| Bassham Wines .....                            | F1       | Waikerie Lifestyle Village .....       | P66      | LaCruz Australia .....                              | 553A     |
| BBB Rural and Outback Clothing .....           | 431      | Elite Kegs & Coopering .....           | 519      | Lawnmower Tractor Pull .....                        | 849      |
| Beautiful Bali Bling .....                     | M54      | Emmetts Farm Machinery .....           | 602      | LEDA .....  | 243      |
| Before You Dig Australia Ltd .....             | P83      | Exotic Licorice & Fudge .....          | P2       | Leigh Luise .....                                   | M47      |
| Bentleys SA / NT .....                         | 239      | Eynesbury House of Couture .....       | P10      | Liberty Oil Australia .....                         | 534      |
| Better Living Australia .....                  | M11      | Family Day Care South Australia .....  | P25      | Little Gem .....                                    | P27      |
| Bible Plaques .....                            | 115A     | Far Horizon Campers .....              | 802      | Loam Bio .....                                      | 239      |
| Big River Isuzu Ute .....                      | 706      | Fika Luxury Glass & Young Living ..... | P35      | Lock 4 Distillery .....                             | F9       |
| Big River Nissan .....                         | 706      | Flamingo Paperie .....                 | P31      | Lolla & Co .....                                    | P45      |
| Big River Toyota .....                         | 706      | Flight Motors .....                    | 601      | Loreto College .....                                | P7       |
| Biological Control Systems .....               | P10      | Flinders University .....              | P29      | Love your Travels .....                             | 128      |
|  |          | FSP Australia .....                    | 433      |   |          |
|  |          | Funky Trail .....                      | 227      |   |          |



# Ready To Retire?

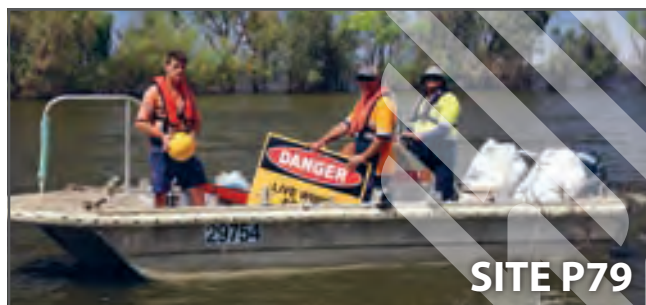
**SITE  
66**

Visit Waikerie Lifestyle Village before retiring anywhere else

- ✓ Own your home
- ✓ No entry/exit fees
- ✓ Low weekly site fees



Scan to learn more



**SITE P79**

## Capture the power of possibility!

Snap a photo as a Power worker!

Chat to us about:

- Safety on your farm or worksite • Preventing outages
- Power restoration — have questions about the floods?
- Saving energy in your home — bring your bill!

**Everyone is welcome!**

Sign up for SMS/email alerts to stay informed during planned and unplanned outages.

Join SA Power Networks at the Exhibition Pavilion for an unforgettable Field Days experience!



SA  
Power  
Networks **Empowering** South Australia

## Visit Emmetts!

Site 602 for Parts and Toys



Site 667 for Tractors and More



Or stop by anytime at 255 Renmark Ave, Renmark  
08 8586 3688 • [www.emmetts.com.au](http://www.emmetts.com.au)





# Exhibitor List



| Name                                  | Site No. | Name                                   | Site No. | Name                                   | Site No. |
|---------------------------------------|----------|--|----------|--|----------|
| Lynmac Metal Art.....                 | 439      | Riverland Lending                      |          | Sole Mates Australia.....              | 221A     |
| MAS National.....                     | P38      | Services Pty Ltd.....                  | 508      | South Australian                       |          |
| Maxiplas.....                         | 624      | Riverland Life FM .....                | M19      | Cochlear Implant Centre .....          | 208      |
| Michael McGuckin .....                | M49      | Riverland Pest Management.....         | P12      | South Australian                       |          |
| Michalantos Fisheries.....            | 237      | Riverland Secondary                    |          | State Emergency Service .....          | 721      |
| Mobility Mates .....                  | 305      | Schools Alliance .....                 | P67      | Spamton Rural Pty Ltd .....            | 623      |
| Mobo Group.....                       | P11      | Riverland SES Group .....              | 721      | Spitwater .....                        | 320      |
| More than Metal.....                  | 216      | Riverland Steel Supplies .....         | M42      | St Francis of Assisi College.....      | P62      |
| Motion .....                          | 327      | Riverland Trailer Bins .....           | 414      | St John Ambulance Service .....        | 605      |
| mteSA.....                            | P13      | Riverside Wildflowers .....            | 132      | St Mark's College.....                 | P51      |
| Murray River Study Hub.....           | P9       | Rivertech Services.....                | 228      | St Mary's Wines and Spirits .....      | 241      |
| Murraylands & Riverland               |          | Riverview Lutheran Rest Home .....     | P68      | St Peter's College .....               | P61      |
| Landscape Board .....                 | 202      | RM Electronics.....                    | 308      | Stratco.....                           | M42      |
| MW Toolbox Manufacturing .....        | 416      | Roe-Aire Riverland .....               | 132      | TAFE SA / MRSH .....                   | P9       |
| NGM Resource Marketing .....          | 102      | Ronco Motors .....                     | 236      | Taubmans .....                         | 411      |
| Niagara Medical Therapy .....         | P19      | Rostrevor College.....                 | P53      | TechTromic Industries .....            | 411      |
| Noel's Island Star Caravans.....      | 801      | Rotech Rural.....                      | 230      | The Bra Lady .....                     | P43      |
| Olympic Industries .....              | 136      | Roundwood Soutions .....               | 323      | The Truck Factory.....                 | 330      |
| One Forty One .....                   | 450      | Royal Life Saving SA.....              | P4       | Tim Whetstone MP -                     |          |
| Origin.....                           | P84      | Rural Business Support.....            | 239      | Member for Chaffey .....               | 526B     |
| Out & About Clothing.....             | P63      | SA Country Fire Service Region 3 ..... | M3       | Ting .....                             | P52      |
| Peats Soils & Garden Supplies.....    | 419      | SA CWA                                 |          | Together We Can.....                   | P30      |
| Pembroke School .....                 | P40      | Riverland Evening Branch .....         | 306      | Tony Pasin MP .....                    | 528A     |
| Penske Australia.....                 | 835      | SA Gate Automation .....               | 423      | Town & Country Solar.....              | P14      |
| Performance Diesel Tuning.....        | 723      | SA Grain Services .....                | 258      | University of Adelaide .....           | P77      |
| Phytech .....                         | P28      | SA MFS.....                            | M3       | Veterans SA.....                       | P57      |
| PIRSA.....                            | 313      | SA Police - Events Team .....          | P85      | Vinotech Machinery .....               | 628      |
| Prince Alfred College .....           | 220      | SA Power Networks.....                 | P79      | Vinpost .....                          | 526A     |
| Pudding Lane.....                     | P36      | Sacred Heart College .....             | P17      | Waikerie Honda .....                   | 338      |
| Quirkeychocs .....                    | 647      | Safe Power Systems .....               | 525B     | Wake Watersports .....                 | 627      |
| Regional Development Australia.....   | P1       | Salou-ja Clothing .....                | P32      | Walford Anglican School for Girls..... | P3       |
| Relationships Australia (SA).....     | 426      | Septic Science .....                   | 130      | Waratah Fencing .....                  | 532      |
| Rev It Up Racing .....                | 506      | Services Australia .....               | M5       | Waterfind.....                         | 622B     |
| RFD First Aid .....                   | 428      | Shearwell Data .....                   | 425      | WESS Welding Equipment                 |          |
| Riely's Little Lolly Shop.....        | 122      | Sheerspeed Shearing Products.....      | 229      | Sales & Service .....                  | 435      |
| Rivergum Christian College .....      | 501      | Showdem Promotions .....               | P70      | Wilderness School.....                 | P72      |
| Riverland Agri Services .....         | 146      | Skeeta Industries .....                | 424B     | Wne Grape Council of SA.....           | 239      |
| Riverland Catholic                    |          | Sleeptime .....                        | 58       | Woolworths .....                       | 513      |
| Primary Schools .....                 | P64      | Sloan Bags .....                       | P39      | WSB Distributors .....                 | 735      |
| Riverland Fire & Safety .....         | 422      | Society of Precision                   |          | YPM Tools Australia.....               | 324      |
| Riverland Heavy Vehicle Services .... | 837      | Agriculture Australia.....             | 239      |  |          |
|                                       |          | Solarpumpteck .....                    | 530A     |  |          |

# Wholesalers & Distributors

Trade Enquiries  
Welcome

**SOCKS  
& UGGS  
MENS - LADIES  
CHILDREN**



by appointment only  
1/12 Industry Blvd  
Carrum Downs  
VIC 3210

**Andrew**

**M** 0413 396 995

**E** [aaasocks@hotmail.com](mailto:aaasocks@hotmail.com)

**W** [aaasocksanduggs.com.au](http://aaasocksanduggs.com.au)

**Largest site ever at the Riverland Field Days...**

## BULK BUY SPECIALS

**COTTON WORK SOCKS:  
\$40 A DOZEN**

**MIGHTY TOUGH WOOL WORK SOCKS:  
\$60 A DOZEN**

**BAMBOO WORK HEAVY DUTY WORK  
SOCKS: \$100 A DOZEN**

**TRADIE COTTON WORK SOCKS:  
\$40 A DOZEN**

**EXPLORER WOOL WORKS SOCKS:  
\$100 A DOZEN**

**SUMMER HATS FROM \$10**

**LEATHER BELTS: \$10**

**AUSTRALIAN MADE SHEEPSKIN  
SCUFFS AND SLIDES:  
\$50 RRP:\$79.95**

**Massive reductions on Australian made  
original UGG BOOTS and SOCKS**

**FORGET THE REST WE ARE THE BEST**

**SPECIALISING IN WORK SOCKS | OVER 300 VARIETIES IN STOCK**

**Come and see our huge range at this years Riverland Field Days site 302**



## SITE NO. NAME

### Agricultural Machinery

- 452 . . . . AME Group Pty Ltd
- 325 . . . . Australian Frost Fans
- 355 . . . . Cowanna Almond Harvesting
- 602 . . . . Emmetts Farm Machinery
- 144 . . . . G & J East (Strathalbyn) Pty Ltd
- 232 . . . . Gallard Machinery
- 559 . . . . Grower Services Pty Ltd
- 140 . . . . Kubpower
- 553A . . . . LaCruz Australia
- 243 . . . . LEDA
- 534 . . . . Liberty Oil Australia
- 723 . . . . Performance Diesel Tuning
- 146 . . . . Riverland Agri Services
- 837 . . . . Riverland Heavy Vehicle Services
- 335 . . . . Ronco Motors
- 258 . . . . SA Grain Services
- 425 . . . . Shearwell Data
- 320 . . . . Spitwater
- 727 . . . . Vinetech Machinery
- 526A . . . . Vinpost
- 532 . . . . Waratah Fencing
- 735 . . . . WSB Distributors

### Arts & Crafts

- 205 . . . . Barmera Markets
- 115A . . . . Bible Plaques
- M40. . . . Cheeky Rascal
- 519 . . . . Elite Kegs & Coopering
- P35 . . . . Fika Luxury Glass & Young Living
- P31 . . . . Flamingo Paperie
- P33 . . . . Hide and Horn
- 120 . . . . Kaine Kraft
- M47. . . . Leigh Luise
- 439 . . . . Lynmac Metal Art
- 216 . . . . More than Metal
- P63 . . . . Out & About Clothing

### Auto Supplies, Fuel, Tyres, etc

- 706 . . . . Big River Toyota
- 829 . . . . CMV Trucks & Riverland Parts
- 534 . . . . Liberty Oil Australia
- 837 . . . . Riverland Heavy Vehicle Services
- 424B . . . . Skeeta Industries
- 338 . . . . Waikerie Honda

### Banking, Finance, Insurance

- P75 . . . . BUPA
- M7. . . . . Defence Health
- 508 . . . . Riverland Lending Services Pty Ltd
- 623 . . . . Sparnon Rural Pty Ltd

### Boating, Marine & Fishing

- 335 . . . . Ronco Motors
- 627 . . . . Wake Watersports

### Caravan & Camping

- 711 . . . . Barossa 4 X 4 & Outdoors
- 806 . . . . Barossa Offroad Campers & Accessories
- 411 . . . . Bunnings Berri
- 829 . . . . CMV Trucks & Riverland Parts
- 804 . . . . Dario Caravans & Repairs
- 802 . . . . Far Horizon Campers
- 917 . . . . La Vista Caravans
- 416 . . . . MW Toolbox Manufacturing
- 801 . . . . Noel's Island Star Caravans
- 308 . . . . RM Electronics

### Cars & Utes

- 550 . . . . Australian Motors
- 711 . . . . Barossa 4 X 4 & Outdoors
- 823 . . . . Barossa Auto Group
- 806 . . . . Barossa Offroad Campers & Accessories
- 706 . . . . Big River Toyota
- 646 . . . . Davison RAM
- 601 . . . . Flight Motors
- 723 . . . . Performance Diesel Tuning
- 320 . . . . Spitwater

# VOLUNTEER SES

BARMERA | BERRI | BLANCHETOWN | LOXTON | RENMARK | RIVERLAND OPERATIONAL SUPPORT



- Support your local community
- Accredited and comprehensive training programs with your goals in mind
- Connect with like-minded people, keep fit & have fun!
- Gain the skills to take on operational roles including Road Crash Rescue, Marine Rescue, Land Search, Storm Salvage, General Rescue, Business Support and more



Visit us at site  
**721**  
or call 1300 364 587



Community | Team | Skills  
#makingadifference  
[ses.sa.gov.au/volunteer](https://ses.sa.gov.au/volunteer)

# Liberty

***For your fuel and Lubricant needs!***

- Fuel & Lubricant Equipment
- Shell Oils & Greases
- Unleaded Grades
- Diesel Grades
- AdBlue®



**Shell Lubricants  
Distributor**

Visit us at  
**RIVERLAND  
FIELD DAYS**  
Site 534



**ENQUIRE NOW**  
**Mark Escritt**



**0407 788 213**



**[orderssa@libertyoil.com.au](mailto:orderssa@libertyoil.com.au)**



## SITE NO. NAME

### Chemicals/Fertilisers

- 620 . . . . Aquatic Weed Control
- 411 . . . . Bunnings Berri
- 419 . . . . Peats Soils & Garden Supplies
- P12 . . . . Riverland Pest Management
- 623 . . . . Sparnon Rural Pty Ltd

### Clothing & Accessories

- 431 . . . . BBB Rural and Outback Clothing
- 302 . . . . AAA Socks
- 233 . . . . Aeolis Leather
- 205 . . . . Barmera Markets
- M54 . . . . Beautiful Bali Bling
- P86 . . . . Clover and Rose
- 829 . . . . CMV Trucks & Riverland Parts
- P10 . . . . Eynesbury House of Couture
- 227 . . . . Funky Trail
- P33 . . . . Hide and Horn
- M47 . . . . Leigh Luise
- P45 . . . . Lolla & Co
- P63 . . . . Out & About Clothing
- 335 . . . . Ronco Motors
- P32 . . . . Salou-ja Clothing
- P39 . . . . Sloan Bags
- P43 . . . . The Bra Lady
- 627 . . . . Wake Watersports

### Community Services

- 15 . . . . 5RM Radio
- M45 . . . . Adventist Development & Relief Agency
- P83 . . . . Before You Dig Australia Ltd
- P75 . . . . Dementia Australia
- P25 . . . . Family Day Care South Australia
- M48 . . . . Hopebooks
- P50 . . . . Kompletecare Community &  
Homecare services
- M49 . . . . Michael McGuckin
- P11 . . . . Mobo Group
- P13 . . . . mteSA

- P1 . . . . Regional Development Australia
- 426 . . . . Relationships Australia (SA)
- M19 . . . . Riverland Life FM
- 721 . . . . Riverland SES Group
- 414 . . . . Riverland Trailer Bins
- P4 . . . . Royal Life Saving SA
- M3 . . . . SA Country Fire Service Region 3
- 306 . . . . SA CWA Riverland Evening Branch
- P85 . . . . SA Police - Events Team
- P79 . . . . SA Power Networks
- P9 . . . . TAFE SA / MRSH
- P57 . . . . Veterans SA
- 513 . . . . Woolworths

### Communication Equipment

- 308 . . . . RM Electronics

### Earthmoving

- P83 . . . . Before You Dig Australia Ltd
- 559 . . . . Grower Services P/L
- 154 . . . . Hitachi
- 534 . . . . Liberty Oil Australia
- 335 . . . . Ronco Motors
- 258 . . . . SA Grain Services
- 320 . . . . Spitwater

### Education

- P31 . . . . Carmen's Road Safety
- 503 . . . . Children's Safari
- P25 . . . . Family Day Care South Australia
- P29 . . . . Flinders University
- M48 . . . . Hopebooks
- M1 . . . . Immanuel College
- 424A . . . . Jad's Driver Training
- M49 . . . . Michael McGuckin
- P13 . . . . mteSA
- P9 . . . . Murray River Study Hub
- 202 . . . . Murraylands & Riverland  
Landscape Board
- 311 . . . . PIRSA



# A home for all Hearts

SITE P17

**Sacred Heart is a place of welcome, hospitality, family spirit and student achievement, both within and outside of the classroom.**

As a co-educational secondary college for Years 7–12, with boarding accommodation and care from Year 9, Sacred Heart College is a community connected by a love of learning and service to others, where your sons and daughters will grow Courageous Hearts.

Please contact the Boarding Registrar on 8350 2559 or email [boarding@shc.sa.edu.au](mailto:boarding@shc.sa.edu.au)



**SACRED  
HEART  
COLLEGE**

**Champagnat Campus** 28 Percy Ave, Mitchell Park SA 5043 | **Marcellin Campus** 195 Brighton Rd, Somerton Park SA 5044

[shc.sa.edu.au](http://shc.sa.edu.au)

**RSSA**  
Riverland Secondary  
SCHOOLS ALLIANCE

Visit us at Site  
**P67**

Discover how Riverland Secondary Schools are educating students for success in a changing world



The Riverland Secondary Schools Alliance is a partnership between the 5 Riverland Secondary Education sites including: Berri Regional Secondary College, Loxton High School, Renmark High School, Swan Reach Area School and Waikerie High School.

This unique partnership strengthens educational opportunities for Riverland Secondary students to help prepare them to be innovative and engaging as productive and successful local and global citizens.

**Strong public education for all**





## SITE NO. NAME

### *Education Continued...*

- 220 . . . . Prince Alfred College
- P1 . . . . Regional Development Australia
- 501 . . . . Rivergum Christian College
- 422 . . . . Riverland Fire & Safety
- P67 . . . . Riverland Secondary Schools Alliance
- 721 . . . . Riverland SES Group
- P68 . . . . Riverview Lutheran Rest Home
- P53 . . . . Rostrevor College
- M3 . . . . SA Country Fire Service Region 3
- P85 . . . . SA Police - Events Team
- P17 . . . . Sacred Heart College
- P62 . . . . St Francis of Assisi College
- 605 . . . . St John Ambulance Service
- P51 . . . . St Mark's College
- P61 . . . . St Peter's College
- P9 . . . . TAFE SA / MRSH
- P77 . . . . University of Adelaide
- P3 . . . . Walford Anglican School for Girls
- 622B . . . Waterfind
- P72 . . . . Wilderness School

### **Electrical & Home Appliances**

- M25 . . . 24/7 Solar & Battery
- 305 . . . Mobility Mates
- 132 . . . Roe-Aire Riverland
- 423 . . . SA Gate Automation
- 525B . . Safe Power Systems
- 320 . . . Spitwater

### **Employment Services**

- P25 . . . Family Day Care South Australia
- P50 . . . Kompletecare Community &  
Homecare services
- P11 . . . Mobo Group
- P13 . . . mteSA
- P1 . . . . Regional Development Australia
- P9 . . . . TAFE SA / MRSH
- P57 . . . Veterans SA

### **Engineering Services**

- 243 . . . LEDA
- 327 . . . Motion

### **Environmental Services**

- M25 . . . 24/7 Solar & Battery
- 325 . . . Australian Frost Fans
- 414 . . . Riverland Trailer Bins
- 622B . . . Waterfind

### **Food, Snacks, Condiments**

- 334 . . . Aussie Popcorn
- 205 . . . Barmera Markets
- P10 . . . Biological Control Systems
- P87 . . . Butch's Small Goods
- M40 . . . Cheeky Rascal
- P2 . . . . Exotic Licorice & Fudge
- 322 . . . Heavenly Beef Jerky
- 402 . . . Kalleske Meats Pty Ltd
- 237 . . . Michalantos Fisheries
- P36 . . . Pudding Lane
- 647 . . . Quirkeychocs
- 122 . . . Riely's Little Lolly Shop
- 306 . . . SA CWA Riverland Evening Branch
- 513 . . . Woolworths

### **Furniture - Indoor & Outdoor**

- 411 . . . Bunnings Berri
- 305 . . . Mobility Mates

### **Garden Supplies**

- 523 . . . APR Tanks
- 411 . . . Bunnings Berri
- 439 . . . Lynmac Metal Art
- 216 . . . More than Metal
- 331 . . . Olympic Industries
- 419 . . . Peats Soils & Garden Supplies
- 146 . . . Riverland Agri Services
- 414 . . . Riverland Trailer Bins

**Kubota**

# CONSTRUCTION RANGE

**KAF****KUBOTA  
AUSTRALIA  
FINANCE**

ACROSS THE CONSTRUCTION RANGE

**BUILDING AUSTRALIA**

131 Fifteenth Street  
Renmark | 08 8586 6714  
[www.growersservices.com.au](http://www.growersservices.com.au)

**Kubota's Construction Range**

Each Kubota construction machine is fueled by a world-class Kubota engine, with the range consisting of excavators, track loaders, skid steers and wheel loaders. Each machine is built for reliability and when you partner with Kubota, you get the performance and power you need to reach new heights.

**SITE 559**

**Tired of glue?**  
**Want to save time?**  
Check out our  
**NEW Magnetic Grinding Papers**

At site 229, Second Avenue!

**Wireless Control  
Handpieces and Counters**

put more  
control  
and  
safety in  
your  
hands!



Handpiece and Counter  
available Sept - Oct 2023

**SheerSpeed®****Shearing Products**

See videos on our website

Ph: 0428 682 120 E: [info@sheerspeed.com.au](mailto:info@sheerspeed.com.au)[www.sheerspeed.com.au](http://www.sheerspeed.com.au)

## RIVERLAND FIRE & SAFETY

**4 Anderson Street, Barmera SA 5345**  
**Phone 08 8588 1121**

**Specialising in:**

- Fire Equipment Servicing for Business and Home
- Service of First Aid Kits
  - Safety Audits
  - Safety Signage
- Emergency Evacuation Plans
  - Training in Basic Fire Safety and Emergency Warden.



**SEE US AT SITE 422, FOR  
OUR FIELD DAY SPECIALS!**



## SITE NO. NAME

### *Garden Supplies Continued...*

- 132 . . . . Roe-Aire Riverland
- 335 . . . . Ronco Motors
- 623 . . . . Sparnon Rural Pty Ltd

## Government Depts, Agencies/

### Political Parties

- P46 . . . . Aged Rights Advocacy Service
- P83 . . . . Before You Dig Australia Ltd
- P25 . . . . Family Day Care South Australia
- 534 . . . . Liberty Oil Australia
- 311 . . . . PIRSA
- P1 . . . . Regional Development Australia
- M3 . . . . SA Country Fire Service Region 3
- M3 . . . . SA MFS
- P85 . . . . SA Police - Events Team
- P9 . . . . TAFE SA / MRSH
- 526B . . . Tim Whetstone MP - Member for Chaffey
- 528A . . . Tony Pasin MP
- P57 . . . . Veterans SA

## Grower & Industry Services

- P8 . . . . Agromillora
- 325 . . . . Australian Frost Fans
- 239 . . . . Grain Producers SA Ltd
- 559 . . . . Grower Services Pty Ltd
- P33 . . . . Hide and Horn
- 419 . . . . Peats Soils & Garden Supplies
- P28 . . . . Phytech
- 146 . . . . Riverland Agri Services
- 335 . . . . Ronco Motors
- 623 . . . . Sparnon Rural Pty Ltd
- 320 . . . . Spitwater
- 526A . . . Vinpost

## Health & Beauty

- P48 . . . . Audika Hearing Clinic
- 205 . . . . Barmera Markets
- M11 . . . . Better Living Australia

- P10 . . . . Biological Control Systems
- P75 . . . . BUPA
- P23 . . . . Changing Mindset Coaching
- P35 . . . . Fika Luxury Glass & Young Living
- P18 . . . . HearClear Audiology
- 206 . . . . Hearing Australia
- M48 . . . . Hopebooks
- P50 . . . . Kompletecare Community & Homecare services
- M49 . . . . Michael McGuckin
- 305 . . . . Mobility Mates
- P19 . . . . Niagara Medical Therapy
- P63 . . . . Out & About Clothing
- P68 . . . . Riverview Lutheran Rest Home
- 208 . . . . South Australian Cochlear Implant Centre

## Home Improvements

- M25 . . . . 24/7 Solar & Battery
- 631 . . . . Action Steel
- P47 . . . . Akora Homes
- P83 . . . . Before You Dig Australia Ltd
- 411 . . . . Bunnings Berri
- M31 . . . . Dollar Curtains & Blinds
- 412 . . . . Gutter Knight SA Pty Ltd
- 331 . . . . Olympic Industries
- M42 . . . . Riverland Steel Supplies
- 414 . . . . Riverland Trailer Bins
- 423 . . . . SA Gate Automation
- 525B . . . Safe Power Systems
- P14 . . . . Town & Country Solar

## Homeware

- 205 . . . . Barmera Markets
- P34 . . . . Dynamic Sales (Tuperware)
- 519 . . . . Elite Kegs & Coopering
- P27 . . . . Little Gem
- 439 . . . . Lynmac Metal Art
- 305 . . . . Mobility Mates
- 102 . . . . NGM Resource Marketing
- 132 . . . . Roe-Aire Riverland



# GWM

SITE  
601



## TANK 300

Starting from **\$46,900**  
Drive Away



## H6

Starting from **\$31,990**  
Drive Away

SAVE **\$3,967**



## CANNON 4X4

Starting from **\$35,990**  
Drive Away

SAVE **\$4,955**



## JOLION

Starting from **\$27,490**  
Drive Away

SAVE **\$2,747**

**5**

YEAR CAPPED  
PRICE SERVICING

5 YEAR/100,000KM ROAD SIDE ASSISTANCE

*Pictures for illustration purposes only • Premium Paint starting at \$495.00*

OFFER APPLIES TO THE DRIVE AWAY PRICE OF SELECTED 2022 BUILD MODELS ONLY.  
SEE [RIVERLANDGWMHAVAL.COM.AU](http://RIVERLANDGWMHAVAL.COM.AU) OR SPEAK TO RIVERLAND GWM TODAY

**7**

YEAR UNLIMITED  
KM WARRANTY

## FLIGHT MOTORS Pty Ltd – THE ONE STOP SHOP

New Mitsubishi, GWM Haval and Suzuki  
Vehicles, Used Vehicles, Finance,  
Service and Parts, Ampol Fuel

CALL US: 8584 7277

LVD2560



# FLIGHT MOTORS

## SITE NO. NAME

### Leisure & Entertainment

- 219 . . . . Cohuna Sports Store
- 519 . . . . Elite Kegs & Coopering
- 305 . . . . Mobility Mates
- P19 . . . . Niagara Medical Therapy
- M19 . . . . Riverland Life FM
- M42 . . . . Riverland Steel Supplies
- 308 . . . . RM Electronics
- P9 . . . . TAFE SA / MRSH
- P14 . . . . Town & Country Solar
- P72 . . . . Wilderness School

### Irrigation

- P28 . . . . Phytech
- 623 . . . . Sparnon Rural Pty Ltd
- 526A . . . Vinpost
- 622B . . . Waterfind

### Media

- 15 . . . . 5RM Radio
- P31 . . . . Carmen's Road Safety
- M49 . . . . Michael McGuckin
- M51 . . . . Murray Pioneer
- M19 . . . . Riverland Life FM

### Motorbikes & Lawn Mowers

- 559 . . . . Grower Services Pty Ltd
- 335 . . . . Ronco Motors
- 338 . . . . Waikerie Honda

### Orchard Machinery, Equipment

- 452 . . . . AME Group Pty Ltd
- 325 . . . . Australian Frost Fans
- 355 . . . . Cowanna Almond Harvesting
- 936 . . . . Drone Agricultural Remote Tech
- 144 . . . . G & J East (Strathalbyn) Pty Ltd
- 559 . . . . Grower Services Pty Ltd
- 243 . . . . LEDA
- 146 . . . . Riverland Agri Services

- 335 . . . . Ronco Motors
- 320 . . . . Spitwater
- 532 . . . . Waratah Fencing

### Refrigeration & Coolrooms

- 132 . . . . Roe-Aire Riverland

### Safety Equipment

- 433 . . . . FSP Australia
- 422 . . . . Riverland Fire & Safety
- M3 . . . . SA Country Fire Service Region 3
- 525B . . . Safe Power Systems

### Security Systems

- 308 . . . . RM Electronics

### Sheds, Garages, Carports

- 631 . . . . Action Steel
- P33 . . . . Hide and Horn
- 331 . . . . Olympic Industries
- M42 . . . . Riverland Steel Supplies

### Solar Power

- M25 . . . . 24/7 Solar & Battery
- 308 . . . . RM Electronics
- 132 . . . . Roe-Aire Riverland
- 423 . . . . SA Gate Automation
- 530A . . . Solarpumpteck
- P14 . . . . Town & Country Solar

### Sport & Recreation

- 829 . . . . CMV Trucks & Riverland Parts
- P63 . . . . Out & About Clothing
- M19 . . . . Riverland Life FM
- 308 . . . . RM Electronics



**SITE  
736**



**Dealer for Pastro Ag supplying  
the Riverland and surrounds.**



**PASTRO AG**

**Phone 0487 315 421**

**Email [admin@awgdieselrepairs.com.au](mailto:admin@awgdieselrepairs.com.au)**

## SITE NO. NAME

### Tanks

- 551 . . . . Access Septic Products
- 523 . . . . APR Tanks
- 332 . . . . Kingspan Water Tanks
- 624 . . . . Maxiplas
- 623 . . . . Sparnon Rural Pty Ltd

### Tourism

- M29 . . . . Angoves Pty Ltd
- 205 . . . . Barmera Markets
- . . . . . Barossa Helicopters
- 128 . . . . Love your Travels
- P1 . . . . Regional Development Australia
- M19 . . . . Riverland Life FM

### Tools - Hand, Power, Workshop

- 411 . . . . Bunnings Berri
- 243 . . . . LEDA
- 331 . . . . Olympic Industries
- 424B . . . Skeeta Industries
- 320 . . . . Spitwater
- 324 . . . . YPM Tools Australia

### Tractors & Forklifts

- 452 . . . . AME Group Pty Ltd
- 602 . . . . Emmetts Farm Machinery
- 144 . . . . G & J East (Strathalbyn) P/L
- 559 . . . . Grower Services P/L
- 364 . . . . Hoods Agrimotive
- 243 . . . . LEDA
- 534 . . . . Liberty Oil Australia
- 723 . . . . Performance Diesel Tuning
- 146 . . . . Riverland Agri Services
- 335 . . . . Ronco Motors
- 258 . . . . SA Grain Services

### Trucks & Transport

- 736 . . . . AWG Diesel Repairs
- 724 . . . . Basic Trailers

- 829 . . . . CMV Trucks & Riverland Parts
- 424A . . . . Jad's Driver Training
- 534 . . . . Liberty Oil Australia
- 723 . . . . Performance Diesel Tuning
- 837 . . . . Riverland Heavy Vehicle Services
- 623 . . . . Sparnon Rural Pty Ltd
- 330 . . . . The Truck Factory

### Wineries / Wine Making

- F10 . . . . 23rd Street Distillery
- 452 . . . . AME Group Pty Ltd
- M29 . . . . Angoves Pty Ltd
- 325 . . . . Australian Frost Fans
- F1 . . . . . Bassham Wines
- M40 . . . . Cheeky Rascal
- 519 . . . . Elite Kegs & Coopering
- 144 . . . . G & J East (Strathalbyn) P/L
- M24 . . . . Heaps Good Spirits
- P44 . . . . Higher Vision
- F2 . . . . . Jackmann Apple Co
- 534 . . . . Liberty Oil Australia
- F9 . . . . . Lock 4 Distillery
- 450 . . . . One Forty One
- 320 . . . . Spitwater
- 241 . . . . St Mary's Wines and Spirits
- 526A . . . Vinpost

### 4WD Vehicles & Accessories

- 711 . . . . Barossa 4 X 4 & Outdoors
- 806 . . . . Barossa Offroad Campers & Accessories
- 706 . . . . Big River Toyota
- 646 . . . . Davison RAM
- 231 . . . . Duttons RAM
- 601 . . . . Flight Motors
- 416 . . . . MW Toolbox Manufacturing
- 723 . . . . Performance Diesel Tuning
- 308 . . . . RM Electronics
- 258 . . . . SA Grain Services



# **WSB** DISTRIBUTORS

AGRICULTURAL & INDUSTRIAL MACHINERY

*WSB Distributors is a family owned business with 85 years of experience in the agricultural industry with branches in: Clare, Jamestown, Saddleworth, Karoonda, Loxton, Humpty Doo (NT) and Cummins.*

LOXTON BRANCH: 8584 6000

HEAD OFFICE: 8842 2177

**SITE 735**



[www.wsb.com.au](http://www.wsb.com.au)





# Riverland Field Days Partners



## SITE DEVELOPMENT PARTNERS



## MAJOR BUSINESS PARTNERS




## STRATEGIC BUSINESS PARTNERS



## SUPPORTING BUSINESS PARTNERS

- Flight Motors • Bunnings • Inspector General Water Compliance • Riverland Life FM
- Berri Visitor Centre • Barmera Visitor Centre • Access Hire



Find us at  
Field Days on  
the corner of  
Eighth Ave &  
Central Blvd



## LET US KEEP YOU ON THE ROAD.

At CMV Truck Centre, we are committed to the efficiency and maintenance of your transport equipment. From our state of the art facilities, we support the Kenworth and DAF product range to ensure our customers obtain maximum uptime from our product with quality parts and service.

Monday - Friday: 8AM - 6:00PM  
Saturday: 7:30AM - 12NOON  
08 8139 4000  
[cmvtruckcentre.com.au](http://cmvtruckcentre.com.au)

### SALES

### SERVICE

### PARTS

### PACLEASE



**CMV Truck Centre**  
100 Port Wakefield Rd  
Cavan, SA 5094  
8139 4000

**TRP Adelaide**  
473 Burton Rd  
Burton, SA 5110  
8280 6600

**CMV Riverland Parts**  
Jellett Rd & Hughes St  
Berri, SA 5343  
8582 2944





# GRAPE HARVESTER PARTS

GRÉGOIRE • NEW HOLLAND • PELLENC

NAIRN • VINESTAR • KORVAN



MEET US AT:



LACRUZ AUSTRALIA  
Mob: + 61 4161 89075  
Email: [matteo@lacruz.com.au](mailto:matteo@lacruz.com.au)

[WWW.LACRUZ.COM.AU](http://WWW.LACRUZ.COM.AU)



## SOCKET WRENCH SET

27PCE. 3/4" DRIVE



**\$129** RRP

**SAVE \$100!!!**

MENTION THIS AD



**VISIT US HERE!**

## MOTORS



**\$50 OFF**

MENTION THIS AD

## JUMPER CABLES



**\$10 OFF**

MENTION THIS AD

**Brett's Tools Sites 129 - 133 in 1st Avenue**



# SafePower

## Safety Systems ✓

*Helping To Keep You Safe In  
The Workplace & Home*

### Your local technician can test:

- ✓ 240V appliances
- ✓ 3 phase equipment
- ✓ Smoke Alarms
- ✓ Microwave Radiation
- ✓ Electric Blankets
- ✓ RCDs
- ✓ Earth Loop Impedence
- ✓ Fire exit lights
- And Much More...

### We also provide:

- ✓ a FREE asset Register
- ✓ a reminder service
- ✓ a 12 month guarantee

**SITE  
525B**

*Come and talk with me now...*

**Brendon Lloyd – 0497 569 169**

Take the guesswork out of fighting frost with our FrostBoss® advanced wind solution.

FrostBoss C49 FrostBoss C59

**SITE 325**

Ian Pearson, National Sales Manager  
 Tel: 0481 613 304 | 1800 797 629  
 ian@australianfrostfans.com.au  
 www.australianfrostfans.com.au

**AUSTRALIAN  
frost fans**

**SWIFT**  
Sprayers

**LINKAGE SPRAYERS THAT  
WON'T BREAK THE BANK!**

**VIEW THE SWIFT SPRAYER RANGE AT  
RONCO MOTORS SITE 236**

**RONCO MOTORS**



# CASE IH FARMALL RANGE 23-115HP



RONCO MOTORS

VIEW THE CASE IH RANGE AT  
RONCO MOTORS SITE 236

CASE IH

ACHIEVE CANOPY PENETRATION & PERFORMANCE  
EFFICIENCY WITH THE CROPLANDS QUANTUM SPRAYER.



CROPLANDS

VIEW THE CROPLANDS RANGE AT  
RONCO MOTORS SITE 236



RONCO MOTORS



# NEW HOLLAND T4.120F

NEW TO  
MARKET



RONCO MOTORS

VIEW THE NEW HOLLAND RANGE  
AT RONCO MOTORS SITE 236



**can-am**



**SEA-DOO**



VIEW THE SEA-DOO &  
CAN-AM OFF-ROAD  
RANGE AT RONCO MOTORS  
POWERSPORTS SITE.



# VINETECH MACHINERY

*'Shaping the evolution of viticulture'*

SITES  
**628**  
TO  
**634**



[WWW.VINETECH.COM.AU](http://WWW.VINETECH.COM.AU)

251 Renmark Avenue, Renmark, SA, 5341 | (08) 8586 3444



# It all started in the back shed



You can start anything in a shed that's built to last. If you're dreaming of a new shed, Olympic Industries have the steel to support almost anything you can imagine.

**SALE  
ON NOW**

**VISIT US AT 136 & 138 CNR CENTRAL BOULEVARD & FIRST AVENUE.**





**VISIT TONY AT THE**

# *Riverland Field Days*

**15 - 16 SEPTEMBER 2023**



**SITE  
528A**

# **TONY PASIN**

**FEDERAL MEMBER FOR BARKER**

 Shop 5, Murray Bridge Green, Riverview Road, Murray Bridge SA 5253

 8531 2466  [tony.pasin.mp@aph.gov.au](mailto:tony.pasin.mp@aph.gov.au)