



RIVERLAND FIELD DAYS

OFFICIAL PROGRAM

**BUY YOUR
TICKETS
ONLINE!**



AAFDA
Association of Agricultural Field Days of Australasia

**September
13th & 14th 2024**

**20
YEAR
STRUCTURAL
WARRANTY**

Site 532 & 534

Cnr Fifth Ave & Central Boulevard

Visit us at this years
Riverland
Field Days

You can start anything in a shed that's built to last. If you're dreaming of a new shed, Olympic Industries have the steel to support almost anything you can imagine.

olympicindustries.com.au

HEAD OFFICE & DISPLAY
Para Hills West • 8349 5744

DISPLAY CENTRES
Clarence Gardens • 8297 9884
Old Reynella • 8381 1099
Pooraka • 8262 3144

Colorbond®



Purchase Field Days Gate Tickets now - Online

www.riverlandfielddays.com.au

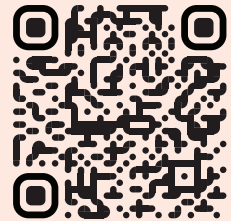
Click on '**BUY TICKETS**' on the home page.

It is easy and simple to do.

There will be limited cash at the Gates.

This will greatly assist our volunteer team.

**GET YOUR
TICKETS HERE**



Visitor Information

GATES OPEN

9.00AM TO 5.00PM

Friday 13th & Saturday 14th, September 2024



BABY & TODDLER CHANGE ROOM

Infant changing area is located at Site 430.



FOOD COURTS

Food stalls are located along Second, Fourth, Sixth Avenues, Pavilion Boulevard and The Hut.



MEDICAL HELP

First Aid volunteers are located near the Administration Centre on site 428.



INFORMATION BOOTH LOST & FOUND

Opposite the Administration Centre



NEED CASH?

ATM services are available opposite the Administration Centre.



ADMISSION

Gate Admission - Adults: \$20

Students u/18 and Children free.

Tickets now also available for purchase online as well as at the gates



PARCEL PICK-UP SERVICE

Purchased goods can be picked up at the Goods Depot adjacent to Gate 7 - refer to site map.



SPECIAL EVENTS TIMETABLE

There is an action packed program organised across the two days. Refer to page 5 for details.



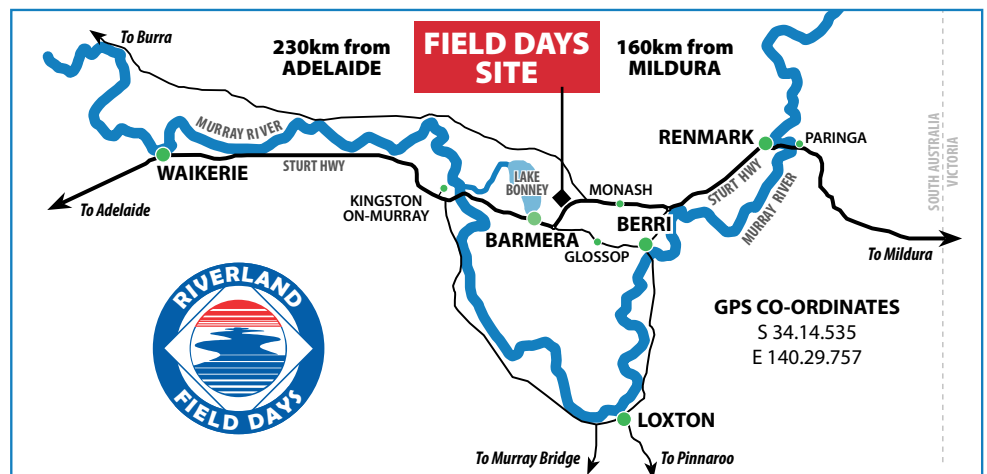
NO DOGS PERMITTED

On site.

While every effort has been made to ensure all content is correct and accurate, the publishers and Riverland Field Days Committee may not be held liable for any changes or inaccuracies.

The Riverland Field Days Official Program may not be reproduced in any form without the written consent of the Manager. Editorial and graphics remain the property of the Riverland Field Days Committee. All rights reserved.

The Riverland Field Days Official program compiled and printed by J.C. Irving & Co. Pty Ltd, Renmark, South Australia, Phone 08 8586 8080.



Chairman's Welcome...



Welcome to the 2024 Riverland Field Days! We are thrilled to have you join us for this exciting event, where we celebrate and feature the best of agriculture, entertainment and community spirit.

This year we are proud to present an array of attractions that promise to inspire and delight visitors of all ages. Prepare to be amazed by

the fascinating stunts of the daredevil motorbike team, enchanted by a mermaid and educated by the wonderful Animals Anonymous wildlife show. Additionally, we have a fantastic showcase of the latest in agricultural machinery, cars, caravans, tools, clothing plus many more features for you to enjoy.

Whilst wandering around the site make sure you take advantage of the delicious food and beverages that are available, certainly something available to everyone's tastes.

I would like to take this opportunity to thank all of the exhibitors for their support of this event and I certainly hope it is profitable and fulfilling for them. While in thank you mode, our event would not be possible without the hard work and dedication of our incredible team of volunteers. Your time, energy and commitment are truly appreciated!

Thank you all for being part of this special occasion. Enjoy the Riverland Field Days!

Warren Mudge – Chairman, Riverland Field Days Inc.

WELCOME by Tim Whetstone, Member for Chaffey



It gives me great pleasure to welcome you to the 65th Riverland Field Days, one of the country's most popular and innovative agricultural forums.

Since 1958, the Riverland Field Days has captivated locals and visitors alike and celebrates the best that our region has to offer. Attracting over 15,000 annually people from inter and intrastate, the two-day annual

event has continued to grow each year in both size and stature, with an extensive display of over 350 exhibitors showcasing their agricultural products and services.

The Riverland Field Days are an integral part of our Riverland and Mallee culture and the most authentic and accessible display of our regional farming and community life. This event holds immense social and economic value for our local communities and highlights the importance of sustainable agricultural production, contributing more than \$14 billion to South Australia's economy.

From its inception, the Riverland Field Days have been a conduit for farmers to collaborate and discuss the latest technologies and techniques in the agricultural and horticultural realm. The ever-changing face of these industries means that farmers are constantly reevaluating practices seeking the most efficient way to grow and market their produce.

If you are not visiting the Riverland Field Days for the agricultural aspect, there is plenty on offer for all tastes and ages. Visit the many exhibitors, enjoy the abundance of the region's food and drink, watch the cooking demonstrations or watch our talented students and musicians perform.

The ongoing success of this event is a testament to the hard work and dedication of the committee and many volunteers whose commitment and vision ensure its continual success. I would like to congratulate all of those involved in making it a reality I'd also like to mention the individual and community organisations who help and support before, during and following the event.

If you are visiting, I encourage you to take some time to explore the unique tourism experiences on offer in this great region. A new generation of food and wine establishments has emerged, we have an abundance of award-winning restaurants, breweries, distilleries, and cellar doors, all set close to the banks of the majestic River Murray.

My electorate office will be located at the Riverland Field Days, so I look forward to seeing the best of our region on display – please feel free to drop by and say hello.

A handwritten signature in blue ink, appearing to read 'T. Whetstone'.

*Tim Whetstone MP
Member for Chaffey*



Contents

	Page		Page
Visitor Information	1	Beers, Wines & Ciders	12
Field Days Site Location	1	Home & Garden Section	14
Welcome	2	Caravans, Campers &	
Food & Drinks	4	4x4 Section	16
Events & Entertainment	5	Pavilions Site Plan	24
Function Pavilion Exhibits	6	Site Map	26
Field Days Safari	6	Exhibitors List	34
Ag Art Wear Competition	9	Exhibitors Products	
Field Days Committee	10	& Services List	38



Advertiser Index

BUSINESS	PAGE	KompleteCare Community & Homecare Services	9	Riverland Life FM	20
A.W.G. Diesel Repairs	47	Kubpower	45	Riverland Radio 5RM & Magic	25
AAA Socks	37	Life Without Barriers	24	Riverland Secondary Schools Alliance	44
Adelaide RV	16	Mayfab Engineering	30	Riverland Steel	14
Angove Family Winemakers	12 & 13	Miracle Park Stables	4	Ronco Motors	50 & 51
Australian Frost Fans	33	Mobility Mates	30	Rostrevor College	43
Bank SA	8	Motion	41	SA Power Networks	32
Butch's Smallgoods	50	Murraylands & Riverland Landscape Board..	15	SafePower Safety Systems	33
CMV Trucks & Parts	49	Northeast Auto Group	17	SES Riverland	32
Country Care Group	32	Olympic Industries	Inside Front Cover	St Peters College	21
Eagle Caravans & Campers	18	Pembroke	30	SuniTAFE	35
Emmetts	36	PGS Photography SA	11	Tim Whetstone, MP	6
Flight Motors	46	Pickering Transport	50	Tony Pasin, MP	Outside Back Cover
Flinders University	36	PIRSA	20	Walford School	33
FSP Oz Products	21	Prince Alfred College	19	Waterfind	43
G2 Netting Systems	29	Rev It Up Racing	16	Wilderness School	41
Gallard Group	22 & 23	Rivergum Christian College	Inside Back Cover	WIN TV	28
Immanuel College	39	Riverland Agri Services	31	Workzone Safety & Signage	24
Inspector General of Water Compliance	44	Riverland Fire & Safety	43	WSB Distributors	481
Karcher	52				

FOOD COURT 1

Chipalicious

Fish & Cips, Satay Beef, BBQ Pulled Pork, Chilli Con Carne

Orex - Greek Souvlaki

Souvlaki in pita bread, Falafel, Saganaki, Hot Chips

Fiesta Tajine

Hot Pita Bread, Deblade, AB Packs, Vegetarian options

Slush Happy

Donuts, slushies, coffee

Renmark Masonic Lodge

Drinks Van

FOOD COURT 2

Cool Cone

Soft Serve Icecream, Gelati, Coffee & Tea

The Wedgie Barn

Gourmet Wedges & Fries, Nachos

Jimmy's Cruzin Kitchen

Churro's, Fish and Chips, Greek Donuts, Lamb Backstraps

Mishes Kitchen

Vietnamese Cuisine

Riverland Life FM

Drinks Van

THE HUT FOOD COURT

Pete's Mobile

Woodfire Pizzas

Pizza

Mario's Numero Uno Coffee

Coffee

Natura Icecream Bar

Regular and waffle cones

Spuds N More

Baked spuds, Yiros, Nachos

Twisty Potato's

Funky twisty potatoes on a stick

Whippd

Ice cream varieties

Berri Netball Club

Drinks Van

PAVILION/ MARQUEE FOOD COURT

Strawberries Galore

Strawberries, Icecream & Sweets

Kebab King

Kebabs, Signature Toppings!

Mr Supersoft

Icecream

Little Miss Daisy

Coffee, Milkshakes & Desserts

Maxine's Baked Potatoes

Baked Potatoes & Nachos

Loxton Lights Group

Drinks Van

FOOD COURT 5

Squid Squad Seafood

Seafood & Chips

ZOOM Juice

Coffee, Donuts, Icecream, Desserts, Drinks

Crave Catering

Spring Rolls, Satay Skewers, Pork Belly, Chips



Tastes of the Riverland

Enjoy sampling local produce in air conditioned comfort

In the Function Pavilion



- Equine Facilitated Experiential Therapy
- Equine Facilitated Mental Health
- Equine Assisted Learning
- Therapeutic Riding
- Mindfulness Trail Walks

SITE
256 & 258

Friday 13th September
Pony Decorating!

- Responsive Horsemanship Coaching
- Pony Parties
- School Groups
- Nursing Home Visits
- Corporate Workshops

Saturday 14th September
Horse & Pony Rides!



79 Moritz Rd Monash 0493 154 383

miracleparkstables@gmail.com www.miraclepark.com.au

BankSA Stage Program

FRIDAY

10.30am Waikerie High School
11.30am Loxton High School
12.30am Berri Regional Secondary College
1.45pm Ag Art Fashion Parade

SATURDAY

9.30am Trick & Mick
11.45am Dale Broughton
1.45pm Ag Art Fashion Parade
3.00pm Trick & Mick



Airtime FMX

Seventh Avenue from Site 709

9.00am, 11.15am, 1.30pm & 4.00pm both days.

Blacksmiths Artists

Site 744 – Working during both days

Wildlife Display & Presentations

Site 553 – Sponsored by the Inspector General Water Compliance. See the advert on page 11

Jamie & Kim's Mobile Zoo

Site 308 – See the advert on page 19



Marianna the Mermaid

Site 415 – 10.00am & 2.30pm each day

See the advert on page 7

Children's Pony Rides

Site 256 – During Saturday only

Miracle Park Stables

Site 256 – Friday 13th Pony decorating and
Saturday 14th Horse & Pony Rides

See the advert opposite page

Vintage Tractors & Machinery

Site 750 – Vintage tractor parade 12 noon and
2.00pm each day

Sheep Dog – Working yard dog demonstration

Site 358 – 10.00am, 12 noon, 2.00pm & 4.00pm
each day



Race Car Simulator

Site 508 – Sponsored by Flight Motors

See the advert on page 16

Barmera Lake Bonney Quilters

Function Pavilion – Quilting display

Riverland Vintage & Classic Car Display – Site 141

Riverland Artists

Function Pavilion – Display and demonstration

Tastes of the Riverland

Function Pavilion – Home grown/made specialties

Function Pavilion Exhibits



- **23rd Street Distillery**
- **Artists of the Riverland**
– Art display & demonstrations
- **Barmera Lake Bonney Quilters**
– Quilting display
- **Jachmann Apple Cider**



COME AND SEE TIM AT SITE 526B

TIM
WHETSTONE MP
MEMBER FOR **CHAFFEY**



08 8582 4230



chaffey@parliament.sa.gov.au



@TimWhetstoneMP



www.timwhetstone.com.au



/TimWhetstoneMP



13 Kay Avenue, Berri SA 5343

EARLY BIRD GATE TICKETS

\$18

(Tickets
online
\$20)

Are available from the following
outlets during business hours:

Barmera - Barmera Visitor Centre

Berri - Berri Visitor Centre

Loxton - Totally Exposed

Renmark - Dave's Work & Safety

Waikerie - Woody's Variety Store
No. 1 Home and Gifts

Up to 5.00 pm on Thursday 12th September

Tickets will **NOT** be available from
these outlets on Friday or Saturday
of the Field Days.

**LET'S GO ON A
FIELD DAYS
SAFARI**

Grab your pack and join
Archie the Giraffe
for a roaring treasure hunt!

Follow the trail to explore
hidden gems and collect
unique gifts.

It's going to be wild!

\$10
INCLUDES
BAG & MAP

SITE 503
SAFARI
THIS WAY

PRESENTED BY
RIVERGUM
CHRISTIAN COLLEGE

MARIANNA the mermaid

10am - 2.30pm Friday & Saturday

10.30am StoryTime

11.30am Treasure Hunt

1pm StoryTime

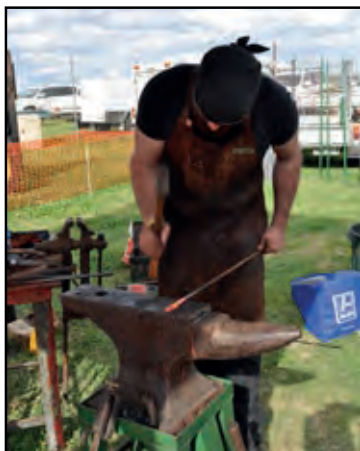
2pm Mermaid Dance Party

SITE 415

Activities will run for 15 minutes each and Marianna and her pirate friend will be available for photos, mermaid questions and temporary tattoos in between!



See the
**Artist
Blacksmiths**
at work on
site 744



SEE PAGE 5
FOR
SHOW TIMES

JAW DROPPING ENTERTAINMENT

ALONG SEVENTH STREET TOWARDS THE PAVILIONS

The Airtime Freestyle Motocross Team push the limits on what is possible, and their action packed show launching motorcycles high in the air while performing some of the most death defying stunts, is guaranteed to have you on the edge of your seat from start to finish!

AIRTIME
FREESTYLE MOTOCROSS TEAM

We backSA Field Days.

Proudly presenting the
BankSA Performing Arts Stage
at the Riverland Field Days.





KompleteCare

Community and Home Care Services

Australia's Leading In-Home and Community Disability & Aged Care Service Provider.

Contact us today



Phone: (08) 8265 5696



Website: kompletecare.com.au



Wearable-Art designed by talented Riverlanders



AG-ART WEAR:
made from materials of an agricultural and/or horticultural nature as produced or found on a farm or block.

Up-CYCLED WEAR:
made from products of a recycled/used nature.

Come and see the creativity for yourself at 1.45pm Friday and Saturday.

Winners announced at the final parade on Saturday.

Find us on
Facebook

**Riverland
Ag-Art**



The Committee & Coordinators



*Warren Mudge (Chairman)
is a painter and fruit grower
from Barmera*



*Emma Gwiazda
Manager Riverland Field
Days and Events Centre*



*Ian Webber is a winegrape
grower from Monash*



*Stirling Sykes is an
electrical contractor from
Renmark*



*Brenton Schober is a
dryland farmer from New
Residence*



*John Plush is a Winkie
grape and citrus grower*



*Anthony Fulwood is a citrus,
winegrape and avocado
grower from Waikerie*



*James Butler is a winegrape
grower and agricultural
consultant from Renmark*



*John Spronk is a grower
and fabricating engineer
from Loveday*



*Wes Kalisch
is a dryland farmer
from Lowbank.*

The running of an event as large as the field days requires not only a lot of planning; but also a lot of people with tasks and responsibilities to perform. The many tasks have been grouped and a coordinator appointed to take responsibility in a particular group. The following are the Coordinators and their respective duties:

Site Co-ordinator -	Anthony Fulwood
Assistant Site Co-ordinator -	John Plush
Site Security Co-ordinator -	John Plush
Site Safety Co-ordinators -	Joe Meek & Ian Webber
Forklift Coordinator -	Brent Walkington & Warren Mudge
Gate Coordinator -	James Butler
Catering Coordinator -	Ian Schober
Stage Coordinator -	Emma Gwiazda
Pavilions Coordinator -	Joe Meek
Friday Social Function Coordinator -	Warren Mudge
Traffic & Parking Coordinators -	Wes Kalisch & Matt Lange
Cashier Coordinator -	Raelene Trimper
Information Desk Coordinator -	Brent Walkington
Parcel Pick Up Coordinator -	Shaun Arnold
Waste Management Coordinator -	John Spronk
Amenities Monitoring Coordinator -	David Jordan
Ag Art Wear Competition Coordinators -	Sarah Plush
Invited Guests Host -	Sue Meek
Electrical Services Coordinator -	Anthony Fulwood
Straw Delivery Coordinator -	Dwayne Leske
Highway Signs / Date Change Coordinator -	Wes Kalisch

HOW TO CONTACT US - T: 08 8588 2311 M: 0409 099 122
E: admin@riverlandfielddays.com.au W: www.riverlandfielddays.com.au



Come see us at the 2024 Field days site 254
For all your photography needs in the Riverland

Commercial property and infrastructure, product and event imaging.

Real Estate valuation, progress and inspection imaging.

Drone aerial imaging.

Landscape, Deep Space, Storm and Light painting
custom art canvases, prints and calendars.

PH 0415 636 916

email pgsphotographysa@gmail.com

www.facebook.com/pgsphotographysa



Official
Photographer



Wildlife Display & Presentations

A fascinating presentation of Australian wildlife
with informative and educational talks during the day



SITE 553 & 555



INDOOR EXHIBITS

Angoves Pty Ltd	M29
Black Bottle Distilling Pty Ltd	F10
Cheeky Rascal	M40
Heaps Good Spirits	M24
Jackmann Apple Co.....	F9



ANGOVE

SINCE 1886

FAMILY WINEMAKERS

VISIT THE RIVERLAND'S OLDEST FAMILY-OWNED WINERY & DISTILLERY

The Angove Family were pioneers of the Riverland region, establishing a winery and distillery in Renmark in 1910.

Today, the family continues its commitment to excellence. Angove Family Winemakers are Australia's leading organic grape grower and winemakers, and the St Agnes Distillery and Barrel Halls craft and mature Australia's most highly awarded brandy along with exceptional gin and single malt whisky.

Visitors are welcome to taste a range of premium, multi-award winning Angove wines at the cellar door, located right in the beating heart of the winery. Tours of the century old St Agnes Distillery are also available daily, with booking required in advance.

The cellar door is open 7 days a week and regularly hosts local artists and jewellery designers in addition to offering local produce for sale. We look forward to welcoming you soon.

Angove Family Winemakers / St Agnes Distillery Cellar Door
271 Bookmark Ave, Renmark | Ph 8085 3148

ST AGNES
EST. 1925
DISTILLERY

Visit Renmark's Original Cellar Door

The Angove family were pioneers of the Riverland, establishing the region's first winery and distillery in Renmark in 1910.

Today, the family continues its commitment to excellence. Angove Family Winemakers is Australia's leading organic grape grower and winemaker, while the St Agnes Distillery and Barrel Halls develop and nurture premium brandy with age statements of 3 to 40 years along with Blind Tiger Organic Gin. It is also the home of Stone's Original Green Ginger wine.

Visitors are welcome to taste a range of premium, multi-award-winning Angove wines at the cellar door, located right in the beating heart of the winery.

The cellar door is open seven days a week and regularly hosts local artists and jewellery designers in addition to offering local produce for sale.

Tours of the St Agnes Distillery are also available, with bookings required in advance.

We look forward to welcoming you soon.

Our Cellar Door is open
10am - 5pm
Monday to Friday
& 11am - 4pm
Saturday & Sunday



ANGOVE
SINCE 1886
FAMILY WINEMAKERS

ST AGNES
EST. 1925
DISTILLERY

Bookmark Avenue, Renmark | Ph (08) 8580 3148
angove.com.au | cellarsales@angove.com.au

Home & Garden Section



The visitor can enjoy browsing the many Home & Garden exhibits.
This page provides a 'quick find' check list of exhibits.

APR Tanks	523
Lynmac Metal Art	321
Olympic Industries	532
Riverland Agri Services	146
Riverland Trailer Bins	414
Ronco Motors	335
Weather Matters with Karl Lijnders.....	P51
Better Living Australia.....	P44
MLEC Solar	202
Mobility Mates.....	507
Niagara Medical Therapy	P19
SA Gate Automation	330
Sleeptime.....	P24
Spitwater.....	212
Town & Country Solar.....	P16



Let Us, Create Your Dream Outdoor Space

Find Us @ Site

P18

Riverland STEEL

Need a new Patio? ... It's good to go to someone you know.



STRATCO
OUTBACK
AUTHORISED DEALER

Say G'day to the Murraylands and Riverland Landscape Board

We'll be in 2 locations so there will be twice as much fun!

3rd Avenue Site 307-309

- ✓ Talk to our **pest and weed management** experts and get practical tips for your farm, garden or lifestyle property.
- ✓ Uncover the importance of **soil health** and how you can maintain it.
- ✓ Learn about **water management** and why it's vital for a sustainable future.

Exhibition pavilion Site 44-48

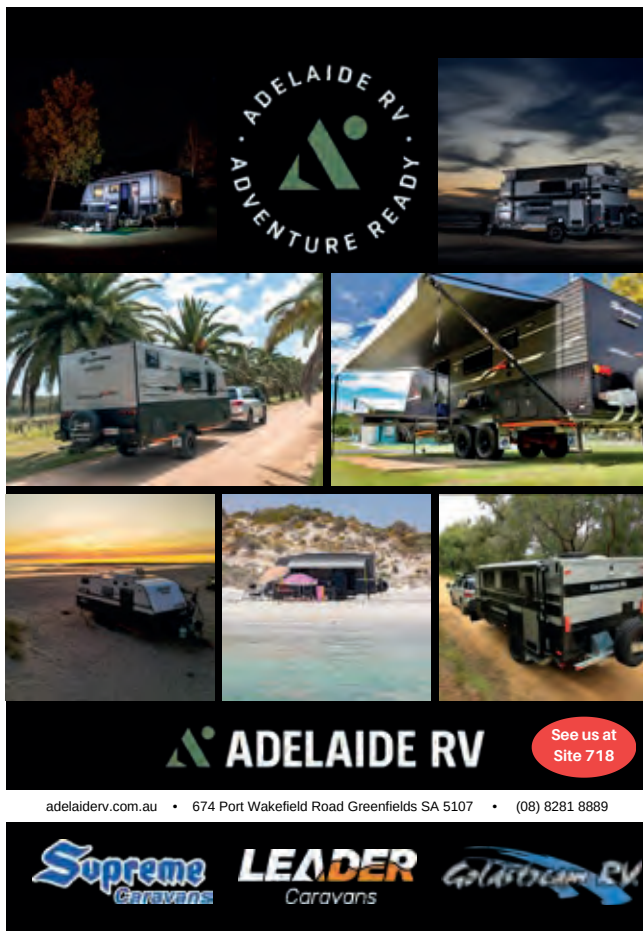
- ✓ Become a **Citizen Scientist** and find out how you can make a real difference.
- ✓ Find out how we're helping to **protect native species** like the Murray-Darling carpet python and regent parrots.
- ✓ **Fun and educational** activities for both kids and adults.

Come and connect with your landscape board and find out about the valuable work being done to preserve our beautiful landscapes.



Caravans, Campers & 4x4 Section

AA Canvas & Shades	P63
Adelaide RV	718
Barossa 4 X 4 & Outdoors	705
CMV Trucks & Riverland Parts	736
Dario Caravans & Repairs	704
Eagle Caravans & Campers	824
Far Horizon Campers	704
Lenta Marine	437
MW Toolbox Manufacturing	511
Opus Camper	703
Weather Matters with Karl Lijnders....	P51
Barossa Auto Group	823
Big River Toyota	708
Davison RAM	646
Flight Motors	603
Northeast Auto Group	604
Stick This Automotive Decals	207



ADELAIDE RV
ADVENTURE READY

See us at Site 718

adelaiderv.com.au • 674 Port Wakefield Road Greenfields SA 5107 • (08) 8281 8889

Supreme Caravans **LEADER Caravans** **Goldstream RV**



TRY YOUR SKILL IT'S FUN IT'S EXCITING!

Kids, teens and parents...
Who is the fastest driver in your family? Try out the Rev It Up Racing Junior Racing Experience and find out!
Race against each other on the virtual race track for ultimate bragging rights!

SITE 508

PROUDLY SPONSORED BY
FLIGHT MOTORS

northeast
auto group

**SITE
604**



YOUR ONE STOP AUTO SHOP.

Your trusted supplier for a
wide range of Trucks,
Machinery and Equipment
Rentals

northeast
ISUZU
TRUCKS

northeast
KOBELCO

BCH

northeast
IVECO

www.northeastauto.com.au



Eagle
Caravans & Campers

ALL NEW 2024 MODEL ON DISPLAY

NOW WITH THE FOLLOWING AS STANDARD FEATURES



EAGLE AIR
ROOF LIFTER



LITHIUM
BATTERIES



VICTRON
BMS



REVERSE CYCLE
AIR CON

ON DISPLAY



HYBRIDS



TIPPER
TRAILERS

FIND US
AT SITE

824



RIVERLAND TESTED!

TESTED
AT
LOVEDAY
4X4

14+ YEARS AS A SOUTH AUSTRALIAN BUSINESS DELIVERING 5 STAR SERVICE

1421 MAIN NORTH ROAD, PARA HILLS WEST 5096 | EAGLECARAVANS.COM.AU | 8281 6696



Join us at the Riverland Field Days, **Site No. 222**, and meet our Boarding and Admissions team to discuss enrolment opportunities for 2025 and beyond.

Start your Journey at pac.edu.au



Sites 308 & 310

Jamie & Kim's Zoo provides interest and fascination for all ages, but especially for children.

It is a great opportunity to learn about our wonderful wild life; and to interact with the animals.



Proudly sponsored by **Opal Packaging SA/NT – supplying the Horticulture Industry**



Mob 0417 248 000 ■ riverlandlife.org.au ■ facebook.com/riverlandlife ■ PO Box 1680 Loxton SA 5333

PIRSA

Visit our pavilion at site 311- 315

The Department of Primary Industries and Regions (PIRSA) staff together with other agencies and exhibitors will be on hand to answer your questions about biosecurity, soil management, farming practices, livestock, fishing regulations and more.

Drop by for a chance to win a regional hamper worth \$300.

Internal exhibitors

Fisheries and Aquaculture
Biosecurity Apiary Unit
Biosecurity Fruit Fly Response
Regions and Major Programs

External exhibitors

drumMUSTER & ChemClear
Marine Safety SA
Mining and Quarrying
Occupational Health and Safety
Committee (MAQOHSC)
SafeWork SA



Government
of South Australia
Department of Primary
Industries and Regions

GALLARD GROUP

AGENTS FOR

AFRÖN
INNOVATION IN MOTION



w | gallardgroup.com.au
e | enquiry@gallardgroup.com.au
t | 08 8582 1671



GALLARD GROUP

PROUD DEALERS FOR THE RIVERLAND AND MALLEE
'AND NOW IN MILDURA'

JCB

**FASTRAC
iCON**

**532-70 AGRI
TELEHANDLER**



WE HAVE A FULL RANGE OF SPARE PARTS & WE CAN SERVICE YOUR MACHINE.
INTERESTED IN SEEING WHAT JCB HAVE INTRODUCED IN THE PAST YEAR
FOR SALES ENQUIRIES CONTACT – DREW GALLARD 0400 761 790
FOR ALL SPARE PARTS AND SERVICE CALL 0477 900 225 OR 85821671



w | gallardgroup.com.au
e | enquiry@gallardgroup.com.au
t | 08 8582 1671



Pavilions



ENTRY

ENTRY

EXIT

PAVILION BOULEVARD

Kids
Soft
Play
Area

Marquee Pavilion

Site Numbers have the prefix 'M'

Exhibition Pavilion

Site Numbers have the prefix 'P'

ENTRY

PAVILION BOULEVARD

ENTRY

ENTRY



workzone
Safety & Signage



**SITE
427**

At Workzone Safety & Signage,
we manufacture all our signage
right here in Hendon, SA

We support the local agricultural
industry, farming community,
civil construction, transport &
equipment businesses as well
as the road traffic industry
& Local / State Governments.

1300 001 434 : workzonesigns.com.au



workzone
Training

Workzone Training offers
Nationally accredited
White Card,
Forklift & Workzone Traffic
Management Training.
RTO45807 - 1300 005 150
workzonetraining.net.au



workzone
Traffic Control

Workzone Traffic Control
provide safe, compliant,
consistent traffic
management solutions
for planned or emergency
work across SA
1300 768 657 - workzone.net.au

Share your world

Become a foster carer

It's the little things that matter most - like having
a safe place to call home, someone you can smile
with and the right support.

You can make an extraordinary difference in the
life of a young person by sharing those ordinary,
everyday moments.

We are looking for compassionate individuals,
couples and families to become foster carers to
provide a safe and supportive home for vulnerable
children and young people. We'll support you 24/7
and provide all the training you need.

If you have a spare bedroom and time to share,
we'd love to hear from you. Contact us today and
be the positive change in a child's life!

1300 592 227

lwb.org.au/foster-care

**LIFE
WITHOUT
BARRIERS**

**SITE
M6**





LIVE & LOCAL

The official Riverland Field Days radio broadcaster keeping you up to date on all that's happening at the Riverland Field Days in 2024!





GATE 2

904	906	908	910	912	916	920	922	924	926	928	930	932	934
-----	-----	-----	-----	-----	-----	-----	-----	-----	-----	-----	-----	-----	-----

PONY RIDES

NINTH AVENUE

903	905	907	909	911	913	917	919	921	923	925	927	929	931	933
804	806	808	810	812	814	818	820	822	824	826	828	830	832	834

OUTDOOR ADVENTURE
AND CAMPING

EIGHTH AVENUE

803	805	807	809	811	813	817	819	821	823	825	827	829	831	833
704	706	708	710	712	714	718	720	722	724	726	728	730	732	734

SEVENTH AVENUE

AIRTIME FMX

703	705	707	709	711	713	715	717	719	721	723	725	727	729	731	733
604	606	608	610	612	614	616	618	620	622	624	626	628	630	632	634

SIXTH AVENUE

603	605	607	609	611	FOOD COURT 2	619	621	623	625	627	629	631	633
504	506	508	510	512		520	522	524	526	528	530	532	534

REV UP RACING
EXPERIENCE

FIFTH AVENUE

SAFARI

503	505	507	509	511	513	515
404	406	408	410	412	414	416

521	523	525	527	ADMIN CENTRE
422	424	426	428	430

FIRST AID
BABY CHANGE ROOM

FOURTH AVENUE

403	405	407	409	411	413	415
304	306	308	310	312	314	316

421	423	425	427	429	431	433
322	324	326	328	330	332	334

WILDLIFE
ZOO

THIRD AVENUE

301	303	305	307	309	311	313	315
202	204	206	208	210	212	214	216

321	323	325	327	329	331	333
222	224	226	228	230	232	234

SECOND AVENUE

201	203	205	207	209	211	FOOD COURT 1	219	221	223	225	227	229	231	233
102	104	106	108	110	112		120	122	124	126	128	130	132	134

FIRST AVENUE

101	103	105	107	109	111	113	115	117	119	121	123	125	127	129	131	133
-----	-----	-----	-----	-----	-----	-----	-----	-----	-----	-----	-----	-----	-----	-----	-----	-----

GATE 8

MARQUEE PAVILION
Refer to map on page 24

21

20

19

Disabled
ParkingBankSA
Stage

16

PUBLIC
GATE 1

5RM

14

TOILETS

13

12

11

FOOD

EXHIBITION PAVILION
Refer to map on page 24

Helicopter Rides

GATE 4

936	938	940	942	944	946	948	950	952	954	956	958	960	962	964	966	968
-----	-----	-----	-----	-----	-----	-----	-----	-----	-----	-----	-----	-----	-----	-----	-----	-----

NINTH AVENUE

935	937	939	941	943	945	947	949	951	953	955	957	959	961	963	965	967
836	838	840	842	844	846	848	850	852	854	856	858	860	862	864	866	868

TRUCKS & TRANSPORT - EIGHTH AVENUE

835	837	839	TRADITIONAL BLACKSMITH DEMONSTRATIONS	847	849	851	853	855	857	859	861	863	865	867
736	738	740		748	750	752	754	756	758	760	762	764	766	768

VINTAGE MACHINERY

SEVENTH AVENUE

735	737	739	741	743	745	747	749	751	753	755	757	759	761	763	765	767
636	638	640	642	644	646	648	650	652	654	656	658	660	662	664	666	668




SIXTH AVENUE

THE HUT	FOOD	645	647	649	651	653	655	657	659	661	663	665	667
		546	548	550	552	554	556	558	560	562	564	566	568


FIFTH AVENUE

TASTES OF THE RIVERLAND

BLACK SNAKE

 AT M			FUNCTION PAVILION	549	551	553	555	557	559	561	563	565	567
				450	452	454	456	458	460	462	464	466	468

FOURTH AVENUE

435	437	439	 FOOD COURT 5	447	449	451	453	455	457	459	461	463	465	467
336	338	340		348	350	352	354	356	358	360	362	364	366	368

THIRD AVENUE

335	337	339	341	343	345	347	349	351	353	355	357	359	361	363	365	367
236	238	240	242	244	246	248	250	252	254	256	258	260	262	264	266	268

PONY DECORATING & RIDES

SECOND AVENUE

235	237	239	241	243	245	247	249	251	253	255	257	259	261	263	265	267
136	138	140	142	144	146	148	150	152	154	156	158	160	162	164	166	168

FIRST AVENUE

CLASSIC CARS

135	137	139	141	143	145	147	149	151	153	155	157	159	161	163	165	167
-----	-----	-----	-----	-----	-----	-----	-----	-----	-----	-----	-----	-----	-----	-----	-----	-----

GATE 6

PARCEL
PICKUP

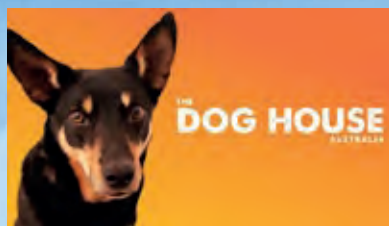
PUBLIC
GATE 5



Disabled
Parking

MARKETING MADE SIMPLE WITH WIN TV RIVERLAND

With the best of free to air tv throughout the
Riverland, Murray Mallee and Limestone Coast



Connect your business with a targeted approach

Gail Campain
campaign@winnetwork.com.au
08 8580 8699

WIN
TELEVISION
SALES

If it's worth growing, It's worth protecting.



- ✓ PEST CONTROL
- ✓ FRUIT QUALITY IMPROVEMENT
- ✓ WATER CONSERVATION
- ✓ CROP MANAGEMENT EFFICIENCY
- ✓ ENVIRONMENTAL PROTECTION
- ✓ CLIMATE RESILIENCE
- ✓ LABOUR COST REDUCTION
- ✓ REGULATORY COMPLIANCE
- ✓ LONGEVITY AND DURABILITY
- ✓ MARKET DIFFERENTIATION



VISIT THE TEAM AT SITE 425

(08) 8384 4500

G2NETTING.AU

SALES@G2NETTING.COM.AU



Our Head of Boarding Doug Fawcett and his family are eager to make you feel right at home at Pembroke Boarding.



Pembroke

Find your home away from home

To learn more about Boarding at Pembroke, visit us at Site P40 in the Exhibition Pavilion, or scan the QR code:



pembroke.sa.edu.au

CRICOS Provider Number 003678



Mobility Mates

SALES | SERVICE | REPAIR | ASSIST

SCOOTERS FOR HIRE SITE 507

Prior Booking Preferred

Assistive
equipment repair
and maintenance

Agents For
REDGUM BRAND
*Daily Living and
Lifestyle Products*
SHOPRIDER

Covering the Riverland and
surrounding areas

Email:
admin@mobilitymates.com Paul 0414 644 352



- Specialising in Pipe & Tube Installations
 - Certified Welding
- Industrial Refrigeration & Steam Pipework
 - Engineering Design & Consultancy
 - Project Management
- General Engineering & Equipment Installations
- Programmed Shutdowns • Repairs & Maintenance
 - Labour Hire • Machinery Hire

Shane May

Manager

0414 707 701

shane@mayfab.com.au

Kingston-on-Murray, South Australia

**Servicing the Wine, Food, Mining
and Agricultural Industries**

YOUR ONE-STOP SHOP FOR ALL YOUR FARMING NEEDS

SITE
152



LARGEST RANGE OF IMPLEMENTS



SEE US IN STORE TODAY PH: 8586 6136



**Riverland
AGRI SERVICES**

**LIAM: 0498 366 098
MECHANIC: 0455 038 686**

57 Renmark Ave, Renmark | admin@riverlandagri.com

VOLUNTEER SES

BARMERA | BERRI | BLANCHETOWN | LOXTON | RENMARK | RIVERLAND OPERATIONAL SUPPORT



- Support your local community
- Accredited and comprehensive training programs with your goals in mind
- Connect with like-minded people, keep fit & have fun!
- Gain the skills to take on operational roles including Road Crash Rescue, Marine Rescue, Land Search, Storm Salvage, General Rescue, Business Support and more



Visit us at site
721
or call 1300 364 587



Community | Team | Skills
#makingadifference
ses.sa.gov.au/volunteer



Country Care
GROUP

Scooter Hire

► Full Day Hire **\$60**

► Half Day Hire **\$45**

Terms & Conditions

1. To book, please contact Kosanna, Louise or Callan at the Berri Store on (08) 8317 5150
 2. Limited scooters available.
 3. Pricing for the Riverland Field Days only 13th & 14th September, 2024.
- Prior Booking Preferred



Proudly servicing the

Riverland

Mon-Fri 9am-5pm

A: 1/5 Vaughan Terrace, Berri
P: (08) 8317 5150
E: riverland@countrycaregroup.com.au
W: countrycaregroup.com.au

Site 233
Near Gate 7

Sales | Hire | Service | Free Trials



SITE P79

Capture the power of possibility!

Snap a photo as a Power worker!

Chat to us about:

- Safety on your farm or worksite
- Preventing outages
- Power restoration — have questions about the floods?
- Saving energy in your home — bring your bill!

Everyone is welcome!

Sign up for SMS/email alerts to stay informed during planned and unplanned outages.

Join SA Power Networks at the Exhibition Pavilion for an unforgettable Field Days experience!



SA
Power
Networks **Empowering South Australia**



Walford

Her Best | Her Way

Walford is a close-knit, vibrant ELC-12 day and boarding school in Adelaide providing an outstanding education for girls and young women for more than 130 years.

Visit us at the Riverland Field Days  Walford boarding

SITE P3

Walford Anglican School for Girls
CRICOS Provider No. 00563

SafePower Safety Systems

*Helping To Keep You Safe In
The Workplace & Home*

Your local technician can test:

- ✓ 240V appliances
- ✓ 3 phase equipment
- ✓ Smoke Alarms
- ✓ Microwave Radiation
- ✓ Electric Blankets
- ✓ RCDs
- ✓ Earth Loop Impedence
- ✓ Fire exit lights
- And Much More...

We also provide:

- ✓ a FREE asset Register
- ✓ a reminder service
- ✓ a 12 month guarantee

**SITE
525**

Come and talk with me now...

Brendon Lloyd – 0497 569 169





**Less frost loss.
Higher Yield.**

It's the technology, engineering and grower-centric support that makes **FrostBoss® Frost Fans outstanding in the field.**

Run your numbers through our ROI calculator and, if you like what you see, give us a call!



 **Ian Mason** – National Sales Manager
0448 111 384
ian.mason@frostboss.com
www.frostboss.com

**SITE
325**

Exhibitor List



Name	Site No.	Name	Site No.	Name	Site No.
AA Canvas & Shades.....	P63	Croplands Equipment.....	136	Kubpower.....	520
AAA Socks.....	302	Dario Caravans & Repairs.....	704	Lenta Marine.....	437
Access Septic Products.....	551	Davison RAM.....	646	Levers Concept Constructions.....	301
Adelaide RV.....	718	Dial a Tow.....	836	Life Without Barriers.....	M6
Adjusta Mattress.....	406	Duttons RAM.....	633	Lincoln College.....	P38
Aeolis Leather.....	223	Eagle Caravans & Campers.....	824	Love your Travels.....	332
Afron.....	232	Elders Real Estate and Insurance ...	M33	Lynmac Metal Art.....	321
Aged Rights Advocacy Service.....	P34	Elite Kegs & Coopering.....	521	Marianna the Mermaid.....	415
Airo Fan.....	232	Emmetts Farm Machinery.....	729	MARS Transport Equipment.....	836
Angoves Pty Ltd.....	M29	ES Tanks.....	336	MAS National.....	P50
APR Tanks.....	523	Estara.....	P71	Michael McGuckin.....	M7
Asbestos Victims Association SA Inc.....	P74	Exact Corp.....	205	Miracle Park Stables.....	254
Audika Hearing Clinic.....	P33	Exotic Licorice & Fudge.....	P78	Mission Australia.....	M38
Aussie Popcorn.....	334	Eynesbury House of Couture.....	P10	MJ's Playhouse.....	422
Australian Frost Fans.....	325	FAE.....	232	MLEC Solar.....	202
Auto Collectors Club Murray Bridge .	122	Family Day Care South Australia.....	P25	Mobility Mates.....	507
AWG Diesel Repairs.....	736	Far Horizon Campers.....	704	Mobishear Australia.....	621
Barefoot Fasionista.....	P8	Flight Motors.....	603	Moda Bella Boutique.....	P45
Barossa 4 X 4 & Outdoors.....	705	Flinders University.....	P13	Mojo Hats.....	522
Barossa Auto Group.....	823	FSP Australia.....	431	Motion Australia.....	328
Basic Trailers.....	724	Fully Grippped.....	211	mteSA.....	M37
Beautiful Bali Bling.....	214	G2 Netting Systems.....	425	Murralee Farm / Brumby Electric Machines.....	210
Before You Dig Australia Ltd.....	P83	Gallard Machinery.....	232	Murray Pioneer.....	P29
Berko Jerky.....	423	Garden Master Sheds.....	227	Murray River Study Hub.....	P9
Best Ever Boots.....	334	Garlic Essentials.....	P7	Murraylands & Riverland Landscape Board.....	307 & P44
Best Sheds.....	201	GJ Gardner Homes.....	416	Murraylands & Riverland Landscape Board (YEL)....	307 & P44
Better Living Australia.....	P44	Gone Walk about Australia.....	408	MW Toolbox Manufacturing.....	511
Bible Plaques.....	112	Good Riddance Insect Repellent.....	332	nbn Co.....	225
Big River Isuzu Ute.....	708	Grain Producers SA Ltd.....	439	Niagara Medical Therapy.....	P19
Big River Nissan.....	708	Grower Services P/L.....	559	Northeast Auto Group.....	604
Big River Toyota.....	708	Gutter Knight SA Pty Ltd.....	412	On Top Roof Restoration.....	452A
BiNe Natrual Beauty.....	P55	Half Cut Fabrications.....	209	Olympic Industries.....	532
BioAg.....	M36	Heaps Good Spirits.....	M24	Opus Camper.....	703
Black Bottle Distilling Pty Ltd.....	F10	Hearing Australia.....	206	Outback Whips and Leather.....	510
Black Snake Productions.....	553	Heavenly Beef Jerky.....	322	Pacific Oyster Co.....	216
Blacksmiths.....	744	Hides - Knives - Leather.....	231	Paint N Play Amusements.....	509
BPF Equipment.....	411	Homestar Promotions.....	229	Pembroke School.....	P40
Brett's Tools.....	131	Immanuel College.....	M1	PGS Photography SA.....	254
Butch's Small Goods.....	P87	Inner Mystic.....	M26	Phytech.....	P55
Cate & Paige Designs.....	P75	Inspector General for Water Compliance.....	435	PIRSA.....	311
Cheeky Rascal.....	M40	Jackmann Apple Co.....	F9	Poppylocket Crafts.....	524
Children's Safari.....	505	Jad's Driver Training.....	424A	Prince Alfred College.....	222
CMV Trucks & Riverland Parts.....	736	Jamie and Kim's Zoo.....	308	Pudding Lane.....	P36
Cohuna Sports Store.....	221	JCB.....	232	Rev It Up Racing.....	508
Collie Park.....	P6	Kakadu Caravans.....	812	Riely's Little Lolly Shop.....	515
Community Living Australia.....	P77	Kalleske Meats Pty Ltd.....	404	River Murray Trading Post.....	352
Conway Flowers.....	P8	Karcher Australia.....	530	Rivergum Christian College.....	503
Cowanna Almond Harvesting.....	355	Koch Contractors.....	451	Riverland Agri Services.....	146
Country Care Group.....	233	Komplete Care.....	N/A		

Discover the Future of Farming with Protected Cropping at SuniTAFE

Ever wondered how we can grow fresh, healthy crops all year round?

With advancements in horticulture, it's possible to cultivate vibrant plants even in challenging conditions. Protected cropping uses technology to create the perfect environment for plants, safeguarding them from pests and extreme weather.

Join us in exploring this innovative industry that's vital for our future.



Stay tuned to learn how you can be a part of this growing field with SuniTAFE.

SITE 426

RT04693 | CRICOS 01985A



For more information
Visit www.sunitafe.edu.au | Call 1300 478 648



Exhibitor List



Name	Site No.	Name	Site No.	Name	Site No.
Riverland Catholic Primary Schools . P64		SA Water M3		Stratco..... P18	
Riverland Haven M32		Sacred Heart College P17		SuniTAFE..... 426	
Riverland Life FM M41		SafePower Safety Systems 525		The Bra Lady P43	
Riverland Pest Management..... P12		Salou-ja Clothing P32		Tim Whetstone MP	
Riverland Rent A Kart 209		Septic Science 327		- Member for Chaffey 526B	
Riverland Secondary		Services Australia P86		Tony Pasin MP 528A	
Schools Alliance P67		Sheep Dog Demonstrations /		Town & Country Solar..... P16	
Riverland SES Group..... 312		crutching 358		Tractor Culture 649	
Riverland Steel Supplies P18		Showdem Promotions P70		Variety The Childrens Charity 421	
Riverland Trailer Bins 414		Sleeptime P24		Wake Watersports 627	
Riverside Estate Renmark 328		Sloan Bags P39		Walford Anglican School for Girls..... P3	
RLS Agribusiness 609		SRO Technology..... 228		Walters Mildura 204	
Rockleigh Services 224		Something Oz..... P57		Waratah Fencing 625	
Ronco Motors 335		Specsavers Berri Optometry M4		Waterfind..... 623	
Rostrevor College..... P53		Specsavers Berri Audiology M5		Weather Matters with Karl Lijnders... P51	
Royal Life Saving SA..... P4		Spitfire SA Boat Trailers 835		Wilderness School..... P72	
SA Country Fire Service Region 3 P27		Spitwater 212		Workzone Traffic..... 427	
SA Gate Automation 330		St Francis of Assisi College..... P62		WSB Distributors 735	
SA MFS..... P52		St Mark's College..... P49		Yellow Brick Road Murray Bridge 203	
SA Police - Murray Mallee..... P84		St Peter's College P61		Young Living P35	
SA Police - Road Safety Section..... P85		Statewide Palliative Care Navigation		YPM Tools Australia..... 324	
SA Power Networks..... P79		Service P1			
		Stick This Automotive Decals..... 207			



Join us at the Riverland Field Days in the Exhibition Pavillion

Chat to Flinders' students and academics, learn about our many courses and pathways to study, including the NEW rural postgraduate doctor of medicine program.



Learn more

SITE P13

Flinders University
Ral Ral Avenue Renmark
Ph: (08) 8586 1000

CORCOT No. 10156A

Stop by Emmetts Site 630-634

For a great line-up of equipment in all sizes!



Or visit Emmetts at
255 Renmark Ave, Renmark

8586 3688 • www.emmetts.com.au



WHOLESALE & DISTRIBUTORS

TRADE ENQUIRIES WELCOME

aasocksanduggs.com.au

OVER 500 VARIETIES IN STOCK
SPECIALISING IN WORK SOCKS



BULK BUY SPECIALS

SITE 302

MIGHTY TOUGH WOOL WORK SOCKS

\$60/DOZEN



RE-ENFORCED COPPER HEEL & TOE SOCKS

\$150/DOZEN



**BAMBOO HEAVY DUTY
WORK SOCKS**
\$100/DOZEN



COTTON WORK SOCKS
20 PAIR PACK
JUST \$40



HAPPY SOCKS
3 PAIRS \$20



PLATFORM UGGS
FROM \$80

SUMMER HATS
FROM \$10



**100% AUSTRALIAN MADE
SHEEPSKIN SCUFFS**
2 PAIRS \$100 RRP \$79.95 EACH

**100% AUSTRALIAN SHEEPSKIN
UGG MOCCASINS**
2 PAIRS \$100 RRP \$79.95 EACH



**AUSTRALIAN MADE MERINO
WORK SOCKS**
\$150/DOZEN



LARGEST SITE EVER AT THE RIVERLAND FIELD DAYS! site 302

contact: Andrew
aasocks@hotmail.com
m: 0413 396 995

aasocksanduggs.com.au



Exhibitor Products & Services



SITE NO. NAME

Agricultural Machinery

- 325 . . . Australian Frost Fans
- 355 . . . Cowanna Almond Harvesting
- 729 . . . Emmetts Farm Machinery
- 232 . . . Gallard Machinery
- 559 . . . Grower Services P/L
- 520 . . . Kubpower
- 210 . . . Murralee Farm / Brumby Electric Machines
- 352 . . . River Murray Trading Post
- 146 . . . Riverland Agri Services
- 335 . . . Ronco Motors
- 228 . . . SRO Technology
- 212 . . . Spitwater
- 649 . . . Tractor Culture
- 625 . . . Waratah Fencing
- 735 . . . WSB Distributors

Arts & Crafts

- 223 . . . Aeolis Leather
- 112 . . . Bible Plaques
- M40. . . Cheeky Rascal
- 521 . . . Elite Kegs & Coopering
- 321 . . . Lynmac Metal Art
- 524 . . . Poppylocket Crafts
- 207 . . . Stick This Automotive Decals

Auto Supplies, Fuel, Tyres, etc

- 708 . . . Big River Toyota
- 736 . . . CMV Trucks & Riverland Parts

Boating, Marine & Fishing

- P63 . . . AA Canvas & Shades
- 437 . . . Lenta Marine
- 335 . . . Ronco Motors
- 627 . . . Wake Watersports
- P51 . . . Weather Matters with Karl Lijnders

Caravan & Camping

- P63 . . . AA Canvas & Shades
- 718 . . . Adelaide RV
- 705 . . . Barossa 4 X 4 & Outdoors
- 736 . . . CMV Trucks & Riverland Parts
- 704 . . . Dario Caravans & Repairs
- 824 . . . Eagle Caravans & Campers
- 704 . . . Far Horizon Campers
- 437 . . . Lenta Marine
- 511 . . . MW Toolbox Manufacturing
- 703 . . . Opus Camper
- P51 . . . Weather Matters with Karl Lijnders

Cars & Utes

- 705 . . . Barossa 4 X 4 & Outdoors
- 823 . . . Barossa Auto Group
- 708 . . . Big River Toyota
- 646 . . . Davison RAM
- 603 . . . Flight Motors
- 212 . . . Spitwater

Chemicals/Fertilisers

- M36. . . BioAg
- P12. . . Riverland Pest Management

Clothing & Accessories

- 302 . . . AAA Socks
- 223 . . . Aeolis Leather
- 214 . . . Beautiful Bali Bling
- 334 . . . Best Ever Boots
- 736 . . . CMV Trucks & Riverland Parts
- P10. . . Eynesbury House of Couture
- 231 . . . Hides - Knives - Leather
- 335 . . . Ronco Motors
- P32. . . Salou-ja Clothing
- P39. . . Sloan Bags
- P43. . . The Bra Lady
- 204 . . . Wallers Mildura
- 627 . . . Wake Watersports

Community Services

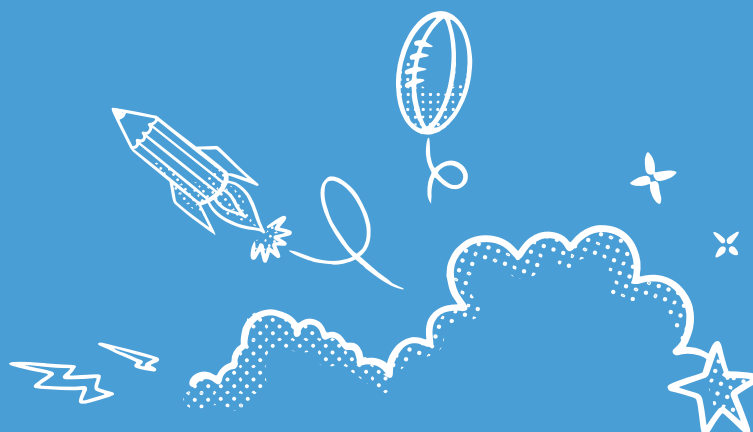
- P83 . . . Before You Dig Australia Ltd
- P71 . . . Estara
- P25 . . . Family Day Care South Australia
- M6. . . Life Without Barriers
- M7. . . Michael McGuckin
- M37. . . mteSA
- P29. . . Murray Pioneer
- M41. . . Riverland Life FM
- 312 . . . Riverland SES Group
- 414 . . . Riverland Trailer Bins
- P4. . . Royal Life Saving SA
- P27. . . SA Country Fire Service Region 3
- P84. . . SA Police - Murray Mallee
- P79. . . SA Power Networks
- P51 . . . Weather Matters with Karl Lijnders

Earthmoving

- P83 . . . Before You Dig Australia Ltd
- 559 . . . Grower Services P/L
- 335 . . . Ronco Motors
- 212 . . . Spitwater

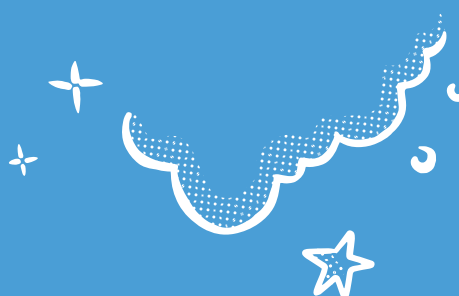
Education

- P83 . . . Before You Dig Australia Ltd
- 505 . . . Children's Safari
- P25 . . . Family Day Care South Australia
- P13. . . Flinders University
- M1. . . Immanuel College
- 424A. . . Jad's Driver Training
- M7. . . Michael McGuckin
- 254 . . . Miracle Park Stables
- M37. . . mteSA
- P9. . . Murray River Study Hub
- 307 & P44 . Murraylands &
Riverland Landscape Board
- 311 . . . PIRSA
- 222 . . . Prince Alfred College
- 503 . . . Rivergum Christian College
- P67 . . . Riverland Secondary Schools Alliance



What if

home didn't feel
so far away?



For us it's not about fitting in, it's about belonging.

Being seen, heard and valued as your true self.

With an inclusive boarding family, you build life-long connections
with support that lasts beyond the day you graduate.

**Visit us at the Riverland Field Days, 13 & 14 September 2024
to talk about Boarding at Immanuel College in 2026 & beyond.**

SITE M1



Immanuel College

immanuel.sa.edu.au

Exhibitor Products & Services



SITE NO. NAME

Education Continued...

- 312 Riverland SES Group
- P53 Rostrevor College
- P27 SA Country Fire Service Region 3
- P84 SA Police - Murray Mallee
- P17 Sacred Heart College
- P62 St Francis of Assisi College
- P49 St Mark's College
- P61 St Peter's College
- P3 Walford Anglican School for Girls
- 623 Waterfind
- P51 Weather Matters with Karl Lijnders
- P72 Wilderness School

Electrical & Home Appliances

- 202 MLEC Solar
- 507 Mobility Mates
- 330 SA Gate Automation
- P24 Sleeptime
- 212 Spitwater

Employment Services

- P25 Family Day Care South Australia
- M37 mteSA

Engineering Services

- 209 Half Cut Fabrications
- 328 Motion Australia

Environmental Services

- 325 Australian Frost Fans
- 414 Riverland Trailer Bins
- 623 Waterfind
- P51 Weather Matters with Karl Lijnders

Food, Snacks, Condiments

- 334 Aussie Popcorn
- P87 Butch's Small Goods
- M40 Cheeky Rascal
- P78 Exotic Licorice & Fudge
- 211 Fully Gripped
- 322 Heavenly Beef Jerky
- 404 Kalleske Meats Pty Ltd
- P36 Pudding Lane
- 515 Riely's Little Lolly Shop

Furniture - Indoor & Outdoor

- 507 Mobility Mates

Garden & Landscaping Supplies

- 523 APR Tanks
- 321 Lynmac Metal Art
- 532 Olympic Industries
- 146 Riverland Agri Services
- 414 Riverland Trailer Bins
- 335 Ronco Motors
- P24 Sleeptime
- P51 Weather Matters with Karl Lijnders

Government Depts, Agencies/

Political Parties

- P34 Aged Rights Advocacy Service
- P83 Before You Dig Australia Ltd
- P25 Family Day Care South Australia
- 311 PIRSA
- P27 SA Country Fire Service Region 3
- P52 SA MFS
- P84 SA Police - Murray Mallee
- P85 SA Police - Road Safety Section
- M3 SA Water
- 526A Tim Whetstone MP - Member for Chaffey
- 528A Tony Pasin MP

Grower & Industry Services

- 325 Australian Frost Fans
- 425 G2 Netting Systems
- 439 Grain Producers SA Ltd
- 559 Grower Services P/L
- P55 Phytech
- 146 Riverland Agri Services
- 335 Ronco Motors
- 212 Spitwater
- P51 Weather Matters with Karl Lijnders

Health & Beauty

- P33 Audika Hearing Clinic
- P44 Better Living Australia
- 206 Hearing Australia
- M7 Michael McGuckin
- 254 Miracle Park Stables
- 507 Mobility Mates
- P19 Niagara Medical Therapy
- P24 Sleeptime
- M5 Specsavers Berri Audiology
- M4 Specsavers Berri Optometry

Home Improvements

- M33 Elders Real Estate and Insurance
- P63 AA Canvas & Shades
- P83 Before You Dig Australia Ltd
- 412 Gutter Knight SA Pty Ltd
- 209 Half Cut Fabrications
- 202 MLEC Solar
- 532 Olympic Industries
- 452A On Top Roof Restoration
- P18 Riverland Steel Supplies
- 414 Riverland Trailer Bins
- 330 SA Gate Automation
- P24 Sleeptime
- P16 Town & Country Solar

Homeware

- 521 Elite Kegs & Coopering
- 321 Lynmac Metal Art
- 507 Mobility Mates
- 524 Poppylocket Crafts
- P24 Sleeptime
- 204 Wallers Mildura

SHE WILL

Within a Wilderness boarding experience lies a unique opportunity for each girl to achieve her potential. Travelling her own unique path, she learns to be adventurous, respectful and courageous. A confident global citizen. A TRAILBLAZER.

DISCOVER MORE

Join us at the Riverland Field Days to learn more about the Wilderness boarding experience and our Boarding Entrance Scholarship, now open for 2026.

wilderness.com.au/scholarships



**SITE
P72**



MiMOTION®

VISIT US AT SITE 328

- Header Front Parts
- Header Parts
- PTO Clutch & Gearbox Parts
- Hydraulic Parts & Onsite Services
- Tractor Attachment & Hitch Systems

**SERVICING THE
AUSTRALIAN
AGRICULTURE
MARKET SINCE 1921**



Exhibitor Products & Services



SITE NO. NAME

Leisure & Entertainment

- 221 . . . Cohuna Sports Store
- 521 . . . Elite Kegs & Coopering
- 437 . . . Lenta Marine
- 254 . . . Miracle Park Stables
- 422 . . . MJ's Playhouse
- 507 . . . Mobility Mates
- P19 . . . Niagara Medical Therapy
- M41 . . . Riverland Life FM
- P18 . . . Riverland Steel Supplies
- P24 . . . Sleeptime
- P16 . . . Town & Country Solar
- P72 . . . Wilderness School

Irrigation

- 523 . . . APR Tanks
- P55 . . . Phytech
- 623 . . . Waterfind

Media & Photography Services

- M7 . . . Michael McGuckin
- P29 . . . Murray Pioneer
- 254 . . . PGS Photography SA
- M41 . . . Riverland Life FM

Motorbikes & Lawn Mowers

- 559 . . . Grower Services P/L
- 335 . . . Ronco Motors

Orchard Machinery, Equipment

- 325 . . . Australian Frost Fans
- 355 . . . Cowanna Almond Harvesting
- 136 . . . Croplands Equipment
- 559 . . . Grower Services P/L
- 621 . . . Mobishear Australia
- 146 . . . Riverland Agri Services
- 335 . . . Ronco Motors
- 212 . . . Spitwater
- 625 . . . Waratah Fencing

Safety Equipment

- 431 . . . FSP Australia
- P27 . . . SA Country Fire Service Region 3

Sheds, Garages, Carports

- 227 . . . Garden Master Sheds
- 532 . . . Olympic Industries
- P18 . . . Riverland Steel Supplies

Solar Power

- 202 . . . MLEC Solar
- 330 . . . SA Gate Automation
- P16 . . . Town & Country Solar

Sport & Recreation

- 736 . . . CMV Trucks & Riverland Parts
- 408 . . . Gone Walk about Australia
- 437 . . . Lenta Marine
- 254 . . . Miracle Park Stables
- M41 . . . Riverland Life FM

Tanks

- 551 . . . Access Septic Products
- 523 . . . APR Tanks

Tourism

- M29 . . . Angoves Pty Ltd
- 332 . . . Love your Travels
- M41 . . . Riverland Life FM

Tools - Hand, Power, Workshop

- 621 . . . Mobishear Australia
- 532 . . . Olympic Industries
- 212 . . . Spitwater
- 324 . . . YPM Tools Australia

Tractors & Forklifts

- 729 . . . Emmetts Farm Machinery
- 559 . . . Grower Services P/L
- 146 . . . Riverland Agri Services
- 335 . . . Ronco Motors

Trucks & Transport

- 736 . . . AWG Diesel Repairs
- 724 . . . Basic Trailers
- 736 . . . CMV Trucks & Riverland Parts
- 424A . . . Jad's Driver Training
- 836 . . . MARS Transport Equipment

Wineries / Wine Making

- M29 . . . Angoves Pty Ltd
- 325 . . . Australian Frost Fans
- F10 . . . Black Bottle Distilling Pty Ltd
- M40 . . . Cheeky Rascal
- 521 . . . Elite Kegs & Coopering
- M24 . . . Heaps Good Spirits
- F9 . . . Jackmann Apple Co
- 212 . . . Spitwater

4WD Vehicles & Accessories

- P63 . . . AA Canvas & Shades
- 705 . . . Barossa 4 X 4 & Outdoors
- 708 . . . Big River Toyota
- 646 . . . Davison RAM
- 603 . . . Flight Motors
- 437 . . . Lenta Marine
- 511 . . . MW Toolbox Manufacturing
- 604 . . . Northeast Auto Group
- 207 . . . Stick This Automotive Decals



ROSTREVOR
COLLEGE

His Home Away From Home

For over 100 years Rostrevor College's strong sense of brotherhood has fostered a feeling of home for boarding students from all over Australia.

Just 15 minutes from Adelaide's CBD, nestled in the foothills of the Mt Lofty Ranges, Rostrevor guides every student to achieve his personal best as he grows into a 'Man for Others'.

To enquire about a personalised boarding tour contact the College Registrar at enrolments@rostrevor.sa.edu.au.

Visit us at **Site P53**, to find out more about enrolment opportunities for 2025 and beyond.



- Water brokering, long-term leasing and carry-over services
- Forward water trading
- Water management tool
- Consulting and conveyancing services
- 24/7 online water exchange
- Water valuation and reporting
- Market information, e-news and allocation announcements

Scan the QR to sign up to
Waterfind's free E-Newsletter



☎ 1800-890-285

✉ admin@waterfind.com.au

🌐 www.waterfind.com.au

✕ Waterfind

in Waterfind Pty Ltd

RIVERLAND FIRE & SAFETY

4 Anderson Street, Barmera SA 5345
Phone 08 8588 1121

Specialising in:

- Fire Equipment Servicing for Business and Home
- Service of First Aid Kits
 - Safety Audits
 - Safety Signage
- Emergency Evacuation Plans
 - Training in Basic Fire Safety and Emergency Warden.





Inspector-
General of
Water
Compliance

Riverland Field Days



Coffee catch up with
the independent
Inspector-General of
Water Compliance

The Inspector-General is an **independent statutory office holder and integrity agency** with oversight, monitoring and enforcement functions and powers in relation to the *Water Act 2007* (Cth) and the *Basin Plan 2012* (Cth).

To find out more, visit us at Site 435, opposite the admin centre. Have a chat with members from the IGWC who live and work throughout the Basin.

Learn more about the Inspector-General:



13 IGWC (13 44 92)



LinkedIn @IGWC



YouTube @IGWCau



igwc.gov.au



Water's Edge podcast

To listen to the Water's Edge podcast, scan the QR code or visit Water's Edge on Apple Podcasts.



RSSA
Riverland Secondary
SCHOOLS ALLIANCE

Visit us at Site
P67

Discover how Riverland Secondary Schools are educating students for success in a changing world



The Riverland Secondary Schools Alliance is a partnership between the 5 Riverland Secondary Education sites including: Berri Regional Secondary College, Loxton High School, Renmark High School, Swan Reach Area School and Waikerie High School.

This unique partnership strengthens educational opportunities for Riverland Secondary students to help prepare them to be innovative and engaging as productive and successful local and global citizens.

Strong public education for all





Kubota



KUB power

SITE 520

CONSTRUCTION | AGRICULTURE | TURF | POWER
kubpower@kubpower.com.au | www.kubpower.com



7 Year
Unlimited KM
Warranty

5 Year
Roadside
Assist

5 Year
Capped Price
Servicing

**COME CHECK OUT THE RANGE
LOCATED AT SITE 603**



**ALL-NEW
CANNON ALPHA**

**MAKES
EFFORT LOOK
EFFORTLESS**



**Tank 300 Lux 4x4
now \$46,990 driveaway***

Discount of \$1,000 over previous selling price



**Cannon 4x4 now \$34,490
driveaway for ABN holders***



**Haval H6 Lux Hybrid
now \$39,990 driveaway***

Discount of \$2,500 over previous selling price



**Ora EV now
\$35,990 driveaway***

Continued discount of \$4,000 over previous selling price

FLIGHT MOTORS Pty Ltd – THE ONE STOP SHOP

New Mitsubishi, GWM Haval and Suzuki Vehicles, Used Vehicles
Finance, Service and Parts, Ampol fuel • CALL US: 8584 7277
GREG: 0419 842 690 • CHRIS: 0423 406 797



FLIGHT MOTORS

LVD2560



A.W.G

DIESEL REPAIRS

SITES
736,738 & 740

Our Services :

- Service of all Diesel Machinery, Ranging From Small Implements & Sprayers To Tractors, Harvesters & Earthmoving Machinery .
- Hydraulic Troubleshooting & Hose Repairs.
- Air Conditioning Troubleshooting & Repairs.
- Exclusive PASTRO AG Dealer.
- Pre & Post Season Repairs.



PASTRO AG

0487 315 421

admin@awgdieselrepairs.com.au

WSB DISTRIBUTORS

AGRICULTURAL & INDUSTRIAL MACHINERY • MECHANICAL & AUTO ELECTRICAL • PRECISION AGRICULTURE

CLARE | SADDLEWORTH | JAMESTOWN | LOXTON | KAROONDA | HUMPTY DOO | CUMMINS



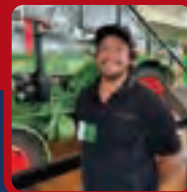
Cameron



Danyal



Damian



Mark



Royd

Seeking tailored solutions for your farm?

Visit the WSB site at the Riverland Field Days to explore our range of innovative products and gain valuable insights from the team to discover solutions tailored to your needs.

Don't miss this chance to find the right strategies to enhance your farming practices.



WSB DISTRIBUTORS HAS ALL YOU NEED TO GROW

SITE 735

www.wsb.com.au



Find us at
Field Days on
the corner of
Eighth Ave &
Central Blvd



LET US KEEP YOU ON THE ROAD.

At CMV Truck Centre, we are committed to the efficiency and maintenance of your transport equipment. From our state of the art facilities, we support the Kenworth and DAF product range to ensure our customers obtain maximum uptime from our product with quality parts and service.

CMV Truck Centre

100 Port Wakefield Rd
Cavan, SA 5094
8139 4000

Monday - Friday: 8:00AM - 6:00PM
Saturday: 7:30AM - 12NOON

SALES

SERVICE

PARTS

PACLEASE



TRP Adelaide
473 Burton Rd
Burton, SA 5110
8280 6600

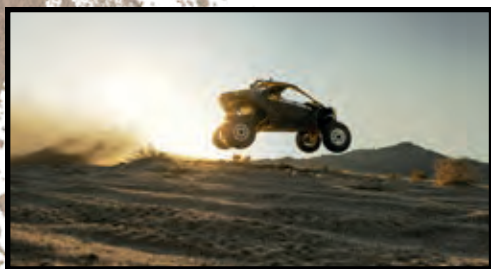
CMV Riverland Parts
Jellett Rd & Hughes St
Berri, SA 5343
8582 2944

Truck Parts EP
3 Bel-Air Dr
Port Lincoln, SA 5606
8682 1000

cmvtruckcentre.com.au



THE RONCO MOTORS POWERSPORTS STORY...



can-am



SEA-DOO



MEET STUART

YOUR CAN-AM AND SEADOO
SALES REP



While Ronco Motors have been here for all your machinery needs since 1960, it was in 2017 that they ventured into BRP sales and *Ronco Motors Powersports* was born. Supplying the Riverland region with Can-Am side-by-sides and SeaDoo jetskis ever since - if it's adrenaline you're after, they've got you covered!

Stuart and the team can help you decide which product is right for you! On the river? Working the farm?

Following a race track?

There's an option to suit.

You can even try before you buy!



1917 Bookpurnong Road, Loxton

PICKERING TRANSPORT GROUP



TRANSPORT SPECIALISTS

RENMARK TO ADELAIDE & MELBOURNE DAILY

SERVICING BRISBANE AND SYDNEY
AS REQUIRED

Servicing... Renmark, Berri, Barmera, Loxton & Waikerie



- General & Container Transport
- Side Loader Hire

Ph 8586 2000 • www.ptg.com.au



Find us at site P87

Premium
Quality

Gluten Free.
Dairy Free.
Nut Free.

Ready
to Eat

(08) 8541 2114
butchssmallgoods@bigpond.com
8 Peake Terrace, Waikerie, SA 5330
www.butchssmallgoods.com.au



RONCO MOTORS

We're here for all your machinery needs.



PINNAROO. LOXTON. KAROONDA. MILDURA

08 8584 5575 | Bookpurnong Rd Loxton | roncomotors.com.au

SALES. PARTS. SERVICE



SITE 335



CASE IH

KÄRCHER

FIELD DAY SHOW SPECIALS

HDS 6/14-4C Hot Water High Pressure Cleaner

**SHOW
SPECIAL PRICE
\$4,999**

PLUS FREE HOSE REEL



**ASK US ABOUT
KÄRCHER
ACCESSORIES**

Free HDS Hose Reel Offer

Get your free hose reel when you purchase select HDS High Pressure Cleaners*

**SITE
530**



**Hose reel
for compact class
2.110-012.0**

RRP \$1,699

FREE



**Hose reel
for middle and
super class
2.110-011.0**

RRP \$1,699

FREE

*Available for Compact, Middle and Super Class. All prices include GST and are only valid for show days.

A photograph of three young students, two girls and one boy, standing outdoors and smiling. They are wearing teal polo shirts with dark blue collars and yellow piping, and dark blue skirts or shorts. The background is a soft-focus outdoor setting with a building and greenery.

EMPOWERING STUDENTS TO THRIVE

VISIT US AT SITE 503



RIVERGUM
CHRISTIAN COLLEGE



VISIT TONY AT THE

Riverland Field Days

**SITE
528A**

13 & 14 SEPTEMBER 2024



TONY PASIN

FEDERAL MEMBER FOR BARKER



Shop 5, Murray Bridge Green, Riverview Road, Murray Bridge SA 5253



8531 2466



tony.pasin.mp@aph.gov.au

Authorised by Tony Pasin MP, Liberal Party of Australia, Shop 5, Murray Bridge Green, Riverview Road, Murray Bridge SA 5253.